

**24 Waterside Drive, Macleay Island, Qld 4184**



**House For Sale**

Saturday, 9 March 2024

24 Waterside Drive, Macleay Island, Qld 4184

**Bedrooms: 2**

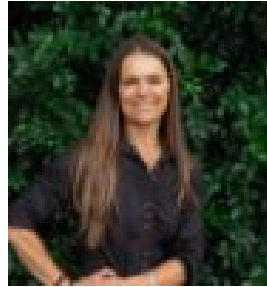
**Bathrooms: 2**

**Parkings: 2**

**Type: House**



Hayley Jane  
0400958567



Nicole Kukas  
0423811531

## All Serious Offers Considered!

Nestled within the tranquillity of nature, this contemporary eco-friendly residence is a masterpiece of modern design. Encompassing a generous land size of 599sqm, the property offers turn-key living, featuring robust and low-maintenance construction. Crafted with a blend of unique glue laminated timber beams, an integrated panel system, and Colorbond cladding, this home is both aesthetically pleasing and environmentally conscious. Designed to capture the essence of coastal living, the house maximizes cross-ventilation, complemented by air-conditioning in key living areas and ceiling fans throughout. The stylish interiors boast European engineered oak flooring, soaring ceilings, and exposed feature wooden beams. Revel in the picturesque views through double-glazed windows, or bask in the natural light that floods in from Velux skylights in both bathrooms. The use of VJ panels and cement sheet lined internals adds a touch of sophistication. The heart of the home is the open-plan living and dining area that seamlessly merges with a modern kitchen adorned with a stone benchtop, and 2pak joinery. Electric appliances complete the well-appointed kitchen, providing both functionality and style. Step outside onto the expansive entertainer's decks, ideal for embracing outdoor living amidst sunshine and breathtaking sunsets. The deck offer's splendid views across lush lawns and gardens, with glimpses of protected waters from Perulpa Bay. This versatile home is thoughtfully designed for flexibility, with the ability to create separate living areas by locking the middle door. Property also has a spacious 10sqm studio for arts and crafts and garden shed in the back yard. Situated on a serene street, the property is conveniently located just 2.3km from the Macleay ferry terminal, golf course, and nearby shopping areas. Enjoy the ease of a 15-minute ferry ride back to the mainland, making this residence a perfect blend of tranquillity and accessibility. - Some Furniture Included - Two Fridges - Washing Machine - All built in cabinetry - Outdoor fan on veranda - Induction four burner - NBN - Studio and Garden Shed - Holiday Rental potential

Disclaimer: We have in preparing this advertisement used our best endeavours to ensure the information contained is true and accurate, but accept no responsibility and disclaim all liability in respect to any errors, omissions, inaccuracies or misstatements contained. Prospective purchasers should make their own enquiries to verify the information contained in this advertisement. \*\* Sizes and attributes represented may have been provided by external parties and no responsibility is to be taken for their accuracy. Please conduct all necessary due diligence.