

2402/187 Liverpool Street, Sydney, NSW 2000



Apartment For Sale

Wednesday, 28 February 2024

2402/187 Liverpool Street, Sydney, NSW 2000

Bedrooms: 2

Bathrooms: 2

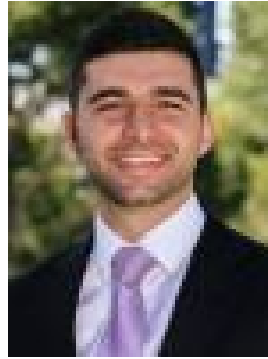
Parkings: 1

Area: 101 m2

Type: Apartment



Tasman Fallshaw
0414990990



Anthony Kannis
0499007711

Auction

Postcard views and refined finishes combine to offer a distinct version of elegance in this premier apartment, synonymous with inner-city prestige. Overlooking the natural beauty of Hyde Park and the harbour, the iconic building offers first-class facilities.

KEY FEATURES

The views - One for the entertainer, the layout presents substantial living space facing north, assuring the majesty of the outlook over Hyde Park, St Mary's Cathedral and The Opera House sails is present throughout the day. Both bedrooms offer a balcony with a view of the park.

The facilities - It occupies the north-west corner of Level 24, with four lifts for speedy access. Constructed by the same company who erected the Sydney Opera House, The Connaught features a brand-new rooftop pool and spa with a sauna, gymnasium and spectacular city views.

The location - Imagine living with Hyde Park at your doorstep, providing space to stroll amongst the greenery while always remaining close to inner city attractions. Enjoy shopping excursions to QVB and Pitt Street Mall, as well as restaurant hubs in Paddington, Darlinghurst, CBD and Circular Quay.

WHAT YOU NEED TO KNOW

Strata - \$3,127 per quarter
Rates - \$309 per quarter
Water - \$178 per quarter
Area - 101 square metres

AT A GLANCE

- Magnificent views over the Anzac Memorial
- Executive living situated atop this tightly held prestige building
- Impressively upgraded in 2019 with a choice of premium finishes
- Occupies 101 sqm with large open living space facing Hyde Park
- Upgraded kitchen with Bosch appliances with induction cooktop
- Bedrooms designed with full-height glazing & private balconies
- Baths feature marble tessellated tiled floors, Cararra benchtops
- Carpeted floors, ducted air con, master with walk-through robe
- Video intercom, secure building, 24/7 concierge
- Parking for one vehicle, lift access, private outlook
- Gym, rooftop swimming pool, sundeck, spa and sauna
- Only 170m from Museum Station, 750m to Town Hall Station

Disclaimer: All information contained herewith, including but not limited to the general property description, price and the address, is provided to City Living by third parties. We have obtained this information from sources we believe to be reliable; however, we cannot guarantee its accuracy. The information contained herewith should not be relied upon and you should make your own enquiries and seek advice in respect of this property.