

242A Patrick Street, Hurstville, NSW 2220



Duplex/Semi-detached For Sale

Friday, 19 April 2024

242A Patrick Street, Hurstville, NSW 2220

Bedrooms: 5

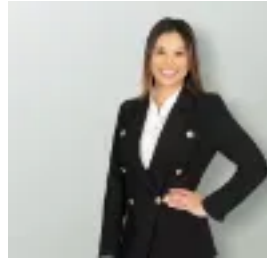
Bathrooms: 3

Parkings: 2

Type: Duplex/Semi-detached



Simon Furnari
0411142046



Nathalie Estrella
0437115619

Forthcoming Auction

Embracing a flawless contemporary design that seamlessly embodies timeless architectural craftsmanship, this exceptional residence stands as the pinnacle for unparalleled elegance and refinement. Fostering a harmonious balance of natural light and open space, its sculptured interiors are crafted with custom joinery, imported stones, fine timbers, and stacker doors. This bespoke residence is centrally positioned between Hurstville and Beverly Hills, with Thorpe Park just a short stroll away. - Free-flowing interiors effortlessly transition to a sunken living and dining zone - Timber flooring, ribbed panel walls and floor-to-ceiling glass warms the home - Elevated entertainers' deck with an in-built kitchenette, low-maintenance yard - Island kitchen enjoys stone detail, a Bosch steam oven, integrated dishwasher - Five plush bedrooms with built-in wardrobes, two have ensuite bathrooms - Master includes a custom walk-in with a desk, a balcony and double ensuite - Bespoke bathrooms with quality fittings and a freestanding tub - VRV Ducted air-conditioning, 7kw solar system, EV charger ready - Internal laundry features AEG washing machine and AEG dryer - Automatic garage with internal access, drive way car space and side entry - Facial recognition entry with wall mounted android tablet - Located 2.1km from Hurstville Station and Westfield, 1.6km from Beverly Hills