

24a Lloyd Street, St Marys, SA 5042

Sold House

Thursday, 16 November 2023

24a Lloyd Street, St Marys, SA 5042

Bedrooms: 3

Bathrooms: 2

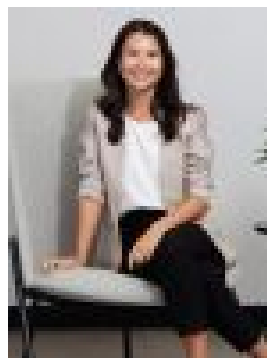
Parkings: 1

Area: 395 m2

Type: House



Amity Dry
0438144224



Maddy Tan
0484607367

\$935,000

Auction, Sat 2nd Dec - 10am (usp) Just 10 minutes from our sparkling metro coast and no more than 15 from the CBD, St Marys takes the best of Adelaide and places it on a platter for this C2019-built 3-bedroom home that extends a stylish, light-filled welcome to young families, professionals and downsizers with lifestyle at the top of their wish list. Don't be misled by its compact first impression; this impeccably presented abode runs deeper than you ever expected and still leaves so much room for pets and little nippers to freely roam amongst its landscaped rear gardens. Open-plan living connects with seamless ease to the alfresco pavilion, ensuring year-round entertaining comes naturally to this solar-powered home with 2.7m-high ceilings, eye-catching timber-look flooring and a layout that astutely places its ensuited master bedroom at the front. Featuring a light-grabbing windowed splashback, expansive 4-person breakfast bar, 900mm appliances and a bounty of storage, the kitchen typifies the home's enviable form and functionality. The large lawned area ensures there's always room for a trampoline or backyard cricket when you aren't at one of the several reserves that dot St Marys, cruising the aisles of Pasadena's famous Foodland or lapping up summer at the beach. It's a beautiful life. -? Custom designed and beautifully kept by its one and only owner -? Striking modern facade -? Electric gated entry -? Lock-up garage and additional off-street parking in front -? Walk-in robe and ensuite to spacious master bedroom -? Zoned ducted reverse cycle heating/cooling throughout -? Powerful 5.5KW solar system -? Storage includes mirrored built-in robes to bedrooms 2 and 3 -? Large separate laundry -? Dishwasher and gas cooktop -? Ceiling fan to alfresco pavilion -? Security system - with monitoring provisions -? Perfectly landscaped, irrigated gardens with aggregate paving to rear -? Walking distance from public transport -? A short drive from Pasadena Green, Westfield Marion and Mitcham Square -? Zoned for Unley High School Certificate of Title - 6205/602 Council - Mitcham Zoning - SN - Suburban Neighbourhood Year Built - 2019 Land Size - 395m2 approx Total Build area - 154sqm Council Rates - \$1,555.45 pa SA Water Rates - \$178.58 pq Emergency Services Levy - \$152.80 pa Ouwens Casserly - MAKE IT HAPPEN™ RLA 286513