

24a Rutherford Avenue, Burraneer, NSW 2230



Sold House

Thursday, 9 November 2023

24a Rutherford Avenue, Burraneer, NSW 2230

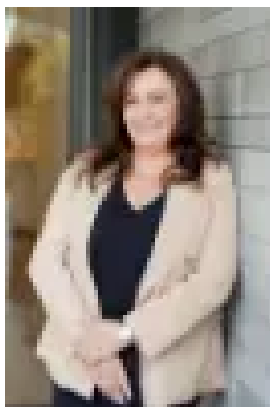
Bedrooms: 3

Bathrooms: 3

Parkings: 3

Area: 1094 m2

Type: House



Suzanne Hibberd
0295318855

Contact agent

Exclusively situated amongst the highly coveted Burraneer peninsula, this remarkable residence is privately positioned, set back from the street offering arguably the best views of the Port Hacking River. As you enter, embrace the tranquillity as you indulge in panoramic views from Gunnamatta Bay, Jibbon, Bundeena and beyond. This home boasts an ideal floorplan with minimal stairs, featuring oversized living, dining and outdoor social spaces boasting a wide north easterly aspect. Perfectly suited to downsizer luxury living and families alike. With a master grand living area offering stacking glass doors opening seamlessly onto an entertainer's balcony, this stunning family retreat offers relaxed resort living both indoors and outdoors. - basks in triple aspect uninterrupted water views, boasting a mostly north and easterly aspect- contemporary timeless design elements, offering an ideal floorplan with everyday living and entertaining in mind- sleek finishes throughout include porcelain tiles in lounge/dining/kitchen area and plush carpet to the bedrooms- multiple outdoor entertaining areas and sparkling in ground pool, all designed to encompass the views- private lower timber deck amongst manicured gardens - deluxe state of the art stone kitchen enjoys oversized island bench, quality Miele appliances including induction cooktop and butler's pantry- master suite features expansive ensuite with underfloor heating and heated towel rails, balcony access and exceptional views - floorplan can be modified to accommodate a fourth bedroom. Downstairs also features a spacious multipurpose room- oversized double garage with additional carport- abundant storage throughout including separate wine cellar - set amongst prestigious homes in a highly coveted blue chip position- impressive land parcel approx 1094sqm*Please note this property has right of carriageway to access the residenceFor more information or to arrange a private inspection contact Suzanne Hibberd 0414 344 222.