

25/144 Shingley Drive, Airlie Beach, Qld 4802



Unit For Sale

Friday, 3 May 2024

25/144 Shingley Drive, Airlie Beach, Qld 4802

Bedrooms: 3

Bathrooms: 2

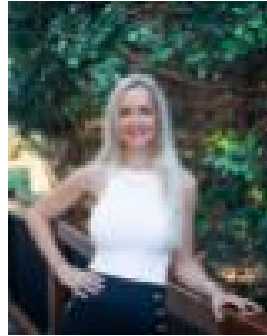
Parkings: 2

Area: 216 m2

Type: Unit



Stephanie McWhirter
0749488500



Clarice Davis
0749488500

Offers

This stunning, fully furnished apartment located within the gated Peninsula complex is sure to impress. This bright and beautiful abode offers the life of leisure you deserve. Located on the ground level, this prestigious 216 sqm floor plan residence offers panoramic views of the Coral Sea Marina and Double Cone Islands, creating a daily masterpiece of natural wonders. With ducted air conditioning ensuring year-round comfort, this waterfront haven boasts a master bedroom with a walk-through robe to the ensuite, two additional bedrooms with built-ins, a study nook, 2 baths. Entertain on the east facing covered balcony or in the gourmet kitchen with quality appliances and a large island bench with a breakfast bar. Two living spaces provide plenty of space to entertain, while the complex amenities include an undercover double tandem car park with storage, lift facilities, a BBQ area and a sparkling swimming pool. Currently in holiday let, it's poised to become the home you'll love coming back to all year round. Refer the following link for onsite holiday let information <https://www.peninsulaairliebeach.com/>