

25/2 Margaret Street, Pimpama, Qld 4209



Townhouse For Sale

Friday, 3 May 2024

25/2 Margaret Street, Pimpama, Qld 4209

Bedrooms: 3

Bathrooms: 2

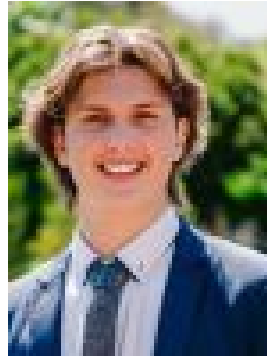
Parkings: 2

Area: 191 m2

Type: Townhouse



Jason Atkinson
0438690656



Brady Temple
0466783988

Auction

INSPECTIONS AVAILABLE PRIOR TO ONLINE AUCTION, CONTACT US TODAY TO REGISTER FOR THE OPEN HOME - ATTEND IN PERSON OR VIRTUALLY! Step into comfort and style here at 25/2 Margaret Street, Pimpama, where luxury meets convenience! This delightful residence offers three generously sized bedrooms, each adorned with ceiling fans, plush new carpeting, and convenient built-in wardrobes-creating an ideal haven for relaxation and rejuvenation. With two modern bathrooms, a large open plan living area and modern kitchen, luxurious living extends seamlessly throughout this double-story abode. Step into a spacious open plan living space, ideal for both entertaining guests and enjoying quiet family moments, effortlessly connecting the living, dining, and kitchen area. In the heart of the living, prepare to be impressed with the modern kitchen, a masterpiece of tasteful design and functionality. With its sleek aesthetics, abundant storage space, and electric stove top, meal preparation becomes a delightful experience. The stylish benchtops add a touch of elegance, inviting you to unleash your culinary creativity and savour every moment spent in this chef haven. Outside you will find your very own private sanctuary-the low maintenance fully fenced yard beckons as a tranquil retreat for outdoor leisure and enjoyment, tailored perfectly for embracing Queensland's abundant sunshine. Features Include: • Large tiled open plan living/dining area downstairs with split air-conditioning for year-round comfort • Spacious modern kitchen with stainless appliances, electric stove top, ample storage and breakfast bar • Two bathrooms • Master bedroom with ceiling fan, walk in wardrobe, separate ensuite and rear balcony access • Two additional bedrooms with ceiling fans and built in wardrobes • Separate laundry • Fully fenced, low maintenance yard • Vacant & Move in Ready! Additional Features: • Brand new plush carpets throughout • Freshly painted • Ceiling fans throughout • Beautifully maintained gardens • Double lock up garage • Two-storey residence • Situated in the heart of Pimpama, Just 2 minutes from the M1 Pimpama stands as a beacon of suburban excellence, offering a lifestyle that seamlessly blends convenience, tranquillity, and endless opportunities for growth. Boasting a perfect balance between urban amenities and natural beauty, Pimpama provides residents with easy access to top-notch schools, bustling shopping precincts, and a wide array of dining options. Beyond its modern conveniences, it is surrounded by picturesque parklands, offering ample opportunities for outdoor recreation and relaxation. Whether exploring the nearby beaches of the Gold Coast, enjoying a round of golf at one of the acclaimed courses, or simply unwinding in the serenity of its leafy neighbourhoods, it embodies the essence of modern living with a touch of suburban charm. With its thriving community and promising future developments, Pimpama truly stands as a place where residents can thrive and create lasting memories. Do not miss this opportunity to make 25/2 Margaret Street your forever home or investment today. Schedule your inspection now and immerse yourself in the pinnacle of contemporary living in the vibrant community of Pimpama! Disclaimer: This property is being sold by auction or without a price and therefore a price guide cannot be provided. The website may have filtered the property into a price bracket for website functionality purposes. Important: Whilst every care is taken in the preparation of the information contained in this marketing, Ray White will not be held liable for the errors in typing or information. All information is considered correct at the time of printing.