

**25 Ashdown Drive, Port Macquarie, NSW 2444**

**Sold House**

Tuesday, 26 March 2024

**hem**

25 Ashdown Drive, Port Macquarie, NSW 2444

**Bedrooms: 3**

**Bathrooms: 1**

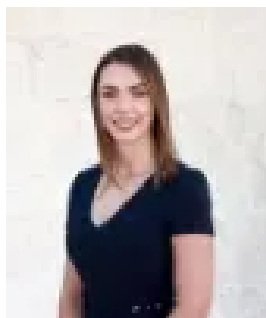
**Parkings: 2**

**Area: 724 m2**

**Type: House**



Naomi Hunter  
0265837733



Kody White  
0413936999

## Contact agent

Positioned in the heart of Lighthouse Beach with parkland to the rear, this affordable family home offers way more than meets the eye. Ready to occupy now and with homes in this popular locale at this price point rare, don't hesitate in making your early enquiry. This completely level property offers a conventional floor plan with the bedrooms and central bathroom in one wing, whilst the lounge, dining and kitchen are at the opposite end of the home. There is also a great adjoining area that is perfectly used as a study/activity room, plus a second office or storage/workshop that is accessed from the dining area. One of the fantastic features of this home is the enormous, undercover entertaining deck that extends from the dining area. Big enough to host the largest of gatherings, it also boasts its own, wood fire heater, ready for the cooler months ahead. Another great feature is the side access to a large, double shed and carport at the rear of the 724 sqm block of land, providing the ultimate man cave for the tools, caravan or boat. - Easy care flooring throughout - Air conditioned plus ceiling fans - Recently painted - Second WC in laundry - Estimated rental return \$600 per week - Pest and building report available. With a reserve to rear and Tacking Point Primary School within an easy walk, this is a great home for families and downsizers alike and for investors, this area is always popular. Could Lighthouse Beach be where you can live, happy ever more? Contact Naomi and Kody to see if this where your new home could be.