

25 Beatrice Street, Bardon, Qld 4065



House For Sale

Friday, 24 May 2024

25 Beatrice Street, Bardon, Qld 4065

Bedrooms: 3

Bathrooms: 1

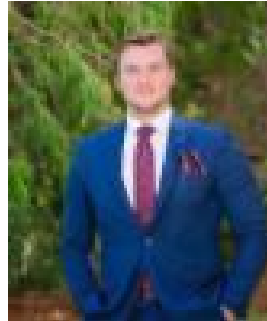
Parkings: 2

Area: 668 m2

Type: House



Gerard Sherlock
0401553182



Flynn Schamburg
0733664033

Auction

Presenting blissful Bardon living amongst the trees, this quaint home exudes old-world character and endless appeal. Resting behind a picket fence on a private 668sqm lot, the house features a charming gabled façade and traditional interiors, where timber floors, ornate fretwork, French doors, stained glass and sash windows shine. Ready for your immediate enjoyment, buyers can move straight in, revitalise with a renovation, or expand by raising and building in underneath (STCA). The floor plan flows across the air-conditioned living room into the dining area, breakfast nook and functional kitchen. You can entertain outside on the large rear deck and relax amongst the established gardens on the undercover patio and grassy backyard. Three bedrooms with built-in robes access the classic bathroom with a leadlight window. A large storage area and a garden shed are positioned downstairs. Situated in Bardon's tree-lined streets, buyers will secure a peaceful lifestyle only 4.8km from the CBD. Families can walk 350m to bus stops, 300m to Little Ducks Childcare and 600m to Ithaca Creek State School. Mt St Michael's and Marist College are less than 1.7km away, and you are only 6 minutes from Stuartholme. You can take the kids to the local parks, playgrounds and sporting clubs, grab a coffee from the nearby cafes, and enjoy shopping and dining with friends at neighbouring Paddington and Ashgrove Marketplace. Property Summary:- Quaint character home on a leafy 668sqm lot- Living room with air-conditioning, dining area, breakfast nook, functional kitchen- Front porch, entertainer's deck, undercover patio, grassy yard, mature gardens- 3 bedrooms with built-in robes, classic bathroom with a leadlight window- Undercroft storage and laundry with scope to raise and build in (STCA)- Less than 1.7km to childcare, Ithaca Creek SS, Marist College and Mt St Michael's- Close to cafes and dining at Bardon, Paddington, and Ashgrove Don't miss your chance to secure this charming period home. Enquire today to schedule a viewing and see what this property offers.