

25 Blenheim Street, Angle Park, SA 5010



Sold House

Thursday, 26 October 2023

25 Blenheim Street, Angle Park, SA 5010

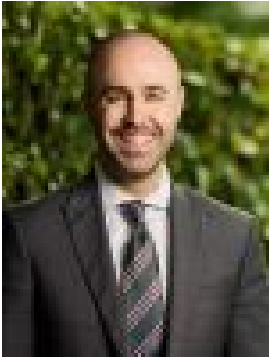
Bedrooms: 4

Bathrooms: 2

Parkings: 1

Area: 300 m2

Type: House



Nick Borrelli
0861871302



Nik Ilic
0421162383

Contact agent

Discover the perfect blend of comfort, style, and space at 25 Blenheim Street, Angle Park. This elegant 4-bed home is ready to welcome you with open arms. Step inside, and let us take you on a tour of your future dream home! The open-plan living, kitchen, and dining area is bathed in natural light. It's the ideal space for family gatherings and entertaining friends. The kitchen is a chef's dream, featuring a breakfast bar, ample storage and bench space, modern stainless steel appliances, and a dishwasher to make meal prep a breeze. The generously sized master bedroom boasts a charming bay window, an ensuite for your convenience, and a spacious walk-in robe. It's your private retreat within your home. Bedroom 2 also comes with a walk-in robe, offering plenty of storage for all your clothing and belongings. Bedroom 4 offers the flexibility to serve as a cozy fourth bedroom or transform into a versatile study, catering to your unique lifestyle and needs. The main bathroom is a delight, with a separate vanity providing ample storage, a separate toilet, and a luxurious bath and shower area with floor-to-ceiling tiles. The laundry amenities provide direct access to the backyard, making laundry day a breeze. Step out into your own oasis, featuring a spacious paved undercover patio area complete with ceiling fans - perfect for alfresco dining and relaxing with family and friends. This home offers a single garage with internal access and an additional off-street parking space, ensuring your vehicles are secure and easily accessible. Perfectly located with The Parks Recreation & Sports Centre just around the corner and Regency Park Golf Course down the road. The Athol Park Child Care Centre and the Emali Early Learning Centre are nearby, ideal for the younger family. A diverse shopping experience is available on Hanson Road with Days Road & South Road providing public transport to and from the city. The Churchill Centre & Arndale Shopping Centre will provide modern shopping and entertainment facilities. Nearby unzoned primary schools include Challa Gardens Primary School, Pennington School R-7, Blair Athol School B-7 & Woodville Gardens School B-7. The zoned high school is Woodville High School. Quality private schools in the area include St Patrick's School, St Josephs School, Mount Carmel College & Whitefriars School. Disclaimer: As much as we aimed to have all details represented within this advertisement be true and correct, it is the buyer/ purchaser's responsibility to complete the correct due diligence while viewing and purchasing the property throughout the active campaign. Property Details: Council | PORT ADELAIDE ENFIELD Zone | GN - General Neighbourhood \\\Land | 300sqm (Approx.) House | 149sqm (Approx.) Built | 2008 Council Rates | \$TBC pa Water | \$TBC pq ESL | \$TBC pa