

25 Chant Drive, Rosenthal Heights, Qld 4370

Sold Residential Land

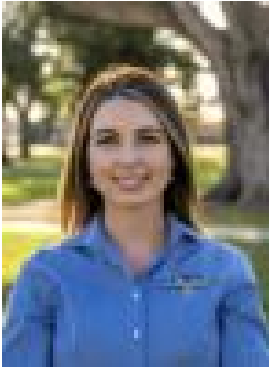
Wednesday, 13 September 2023



25 Chant Drive, Rosenthal Heights, Qld 4370

Area: 800 m2

Type: Residential Land



Tiffany Cruice

Contact agent

Located in 'Orchard Grove' - on the south-western side of Warwick. This allotment is approx a 5 minute drive to the CBD. This is a fantastic spot to build your dream home! If you have been looking for somewhere that offers convenience to everything but also pleasant mountain views, this is it! Features include: * 800 sqm allotment * Town water & town sewerage * Underground power * Pretty views * Mail & bin services * No easements * No building covenants Secure your block now so you can start planning your build!