

25 Chatswood Court, Deebing Heights, Qld 4306

Sold House

Wednesday, 23 August 2023



25 Chatswood Court, Deebing Heights, Qld 4306

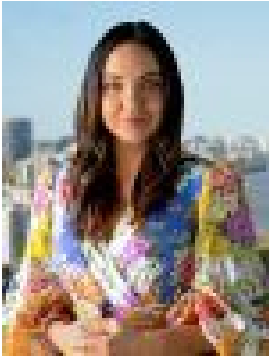
Bedrooms: 4

Bathrooms: 2

Parkings: 2

Area: 604 m²

Type: House



Laney McQueen

\$620,000

This amazing family home is less than 5 years old and is still under builders warranty. The home features tiling throughout the large fully air-conditioned two (2) totally separate air-conditioned internal living areas (not one), a stylish kitchen with stone benchtops and stainless steel appliances including a dishwasher. It also has the added benefits of being located on a large elevated 604m² fully fenced block with the most amazing views and breezes. This amazing family home is currently vacant so you can move into the home in thirty days or less. Best of all it has been priced to sell quickly with an incredible value for money price of offers over \$615,000! This feature packed family home offers four large bedrooms all with carpets, built-in robes, screens and fans. The large master bedroom has a large walk-in robe and stylish designer look ensuite with a large vanity with plenty of storage. Extras to this home include two (2) separate living areas plus a split system air conditioner, partial security, a large alfresco pergola, 2022 Compliant Smoke Alarms, NBN internet services as well as a larger than normal and totally useable 604m² fully fenced block with partial rear yard access. For the investors, this feature packed family home is currently vacant but has been rent appraised at \$550 per week. Ipswich Council Rates: \$626 per quarter - subject to change. Water Charges: \$201 per quarter (plus consumption) - subject to change. This amazing executive family home is located in a prime position within the Highgrove Estate in Deebing Heights. Because it is in Deebing Heights you have access to unrivalled manicured parks, gardens and overall liveability. Within a short distance you will find the Yamanto and Winston Glades Shopping Centre with their own Woolworths & IGA Supermarket, McDonalds, Yamanto Tavern and associated specialty stores. You also have quick access to Brisbane, and Springfield (Orion Shopping Centre) via the Centenary Highway extension. The area is serviced by the Deebing Heights State Primary School, Bethany Lutheran Private Primary School, and the Bremer State High School. There is also, in many cases, free or government subsidized bus transport to a host of private schools including St Edmunds and St Mary's Colleges, Ipswich Boys and Girls Grammar Schools and West Moreton Anglican College. This is arguably one of the best returning and most luxurious residential investment opportunities available within the ever popular and constantly expanding western corridor of South East Queensland. The best part - you can own this feature packed family home in a tranquil new home area that is in close proximity to the new Deebing Heights State School, the brand new Yamanto Central Shopping Centre, the Winston Glades & Orion Shopping Centre, the Ipswich CBD & Riverlink as well as electric train to Brisbane all at a price you can actually afford! Most importantly, you won't find a better presented or better value for money family home and it has been priced to sell quickly at offers over \$615,000. Listing agent: Steve Athanates. Don't be disappointed, call me now - I'm waiting for your call. NGU Real Estate Ipswich - with Offices at Brassall, Ripley, Karalee, Greater Springfield and Toowoomba - Our Five (5) Great Locations Means We've got Ipswich and its Surrounds Covered! Results Speak Louder Than Words. Disclaimer: NGU Real Estate Ipswich has taken all reasonable steps to ensure that the information in this advertisement is true and correct but accept no responsibility and disclaim all liability in respect to any errors, omissions, inaccuracies or misstatements contained. Prospective purchasers should make their own inquiries to verify the information contained in this advertisement.