

25 Kentia Close, Port Macquarie, NSW 2444

Sold House

Thursday, 1 February 2024

25 Kentia Close, Port Macquarie, NSW 2444

Bedrooms: 3

Bathrooms: 2

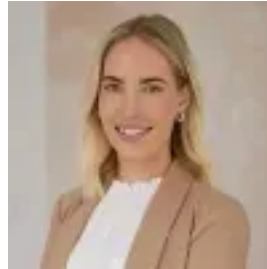
Parkings: 2

Area: 650 m2

Type: House



Greg Bates
0418112025



Emily Hay
0432629713

Contact agent

Nestled in the heart of Lighthouse Beach, this elegantly appointed, spacious home exudes character and charm, the ultimate surprise package. Be greeted by beautifully landscaped gardens and a welcoming portico entry. Indoors lends itself to relaxed family living and entertaining with formal and informal areas centred around a sunken lounge room, a warm and cosy space that invites conversation. A talking point, the stunning ceiling rose, an original feature that adds to this home's unique charm. Decorative cornicing further enhances its character. The family-sized kitchen is well equipped for entertaining with gas cooking, quality appliances, ample storage, generous bench space, a pantry, and convenient access to a large utility room that can double as a butler's pantry. Wake up to a peaceful outlook across the backyard greenery from the grand master bedroom. Flooded with natural light, this restful retreat boasts ensuite, expansive built-in robes, and a delightful window seat where you can relax and take in the gorgeous view. Two generous bedrooms have their own private wing and are serviced by an immaculate 3-way bathroom. At the rear of the home, you'll find a screened summer room that leads to a private outdoor oasis. Here, you can immerse yourself in the beauty of established tropical gardens and a lush green lawn, the perfect space to meander and connect with nature. Additional inclusions are reverse cycle air conditioning, ceiling fans, timber plank floors, plush carpet, beautiful big windows, and exceptional storage throughout. A double garage provides secure access into the home, providing peace of mind. Situated in a premier street, this sought-after coastal location is within 3kms to Lighthouse Beach, alfresco cafes, Emerald Downs Shopping Plaza, local tavern, an 18-hole golf course, and Tacking Point Primary School. The convenience and amenities of this area are unparalleled. Embrace the charm and character that awaits you at 25 Kentia Close. It truly is a unique property, don't miss the opportunity to make it your own.

Property Descriptions - Spacious home brimming with character in Lighthouse Beach - Beautifully landscaped gardens, private oasis backyard - Family sized kitchen with new stove top and oven installed - Air conditioning unit and hot water system recently upgraded - Formal and informal living areas - Brilliant storage, grand master retreat with window seat - Screened summer room, big windows, oversized bedrooms - Decorative cornices and beautiful ceiling rose feature - Within 3km radius of beach, shops, golf course, primary school

Property Details: Council: \$2,800 p/a approx. Land Size: 650 m² approx Rental Assessment: \$600 - \$675 p/w

The information contained in the advertising of this property is based on information provided to the agents, and the vendor and agents expressly disclaim any liability arising therefrom. The accuracy of the information cannot be guaranteed, and prospective purchasers should make their own enquiries and form their own judgement as to these matters.