

# 25 Langhorne Crescent, Rowville, Vic 3178

## Sold House

Wednesday, 11 October 2023



25 Langhorne Crescent, Rowville, Vic 3178

Bedrooms: 5

Bathrooms: 3

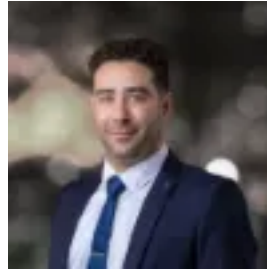
Parkings: 2

Area: 595 m2

Type: House



Said Murad  
0397032460



Rami Khalil  
0468815718

**\$1,380,000**

Nestled within the prestigious Sovereign Crest Estate, this magnificent Metricon home invites you to experience the epitome of luxurious living. Prepare to embark on the lifestyle of your dreams, where an abundance of family-friendly spaces seamlessly blends with unrivalled comfort and style. Prepare to be enthralled by a residence that summarises spaciousness, sophistication, and seclusion - a haven where every day promises endless delights for the entire family. Unveil a world of richness with no less than five distinct living areas, catering to your every need. Whether it's the greatness of formal living and dining spaces, the warmth of the family room, the excitement of the rumpus room on the lower level, or the serene retreat on the upper floor - this home has it all. With four generously sized bedrooms and a flexible study/5th bedroom, there's ample space for everyone. The master suite, complete with its own balcony, ensuite, and walk-in robe, offers a personal sanctuary of comfort and luxury. A culinary masterpiece awaits in the fully equipped kitchen, adorned with sleek stone benchtops, high-end stainless-steel appliances, and abundant built-in cabinetry. It effortlessly flows into an open meal area, where family gatherings and moments of relaxation become cherished memories. Step outside, and be greeted by an expansive covered alfresco oasis, perfectly suited for both family gatherings and lively celebrations. Beyond, the low-maintenance backyard, providing an easy retreat for outdoor enjoyment without the hassle of extensive upkeep. Additional highlights include the convenience of ducted heating, the refreshing touch of evaporative cooling, and a double garage with internal access - all enhancing the ease and comfort of your daily life. Located in a family-centric neighbourhood, you'll relish the advantages of proximity to esteemed schools such as Karoo Primary School, Heany Park Primary, and Lysterfield Primary School. Embrace the beauty of Karoo Road Reserve, perfect your swing at Waterford Valley Golf Course, and enjoy easy access to various amenities. Don't just live - thrive in a home that offers the grandeur, luxury, and excitement you deserve. Your Sovereign Crest Estate dream lifestyle awaits!