

25 Mileham Circuit, Rutherford, NSW 2320



Sold House

Friday, 26 April 2024

25 Mileham Circuit, Rutherford, NSW 2320

Bedrooms: 4

Bathrooms: 2

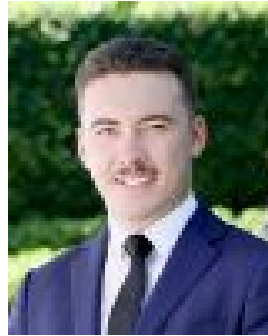
Parkings: 2

Area: 1050 m2

Type: House



Ricky Briggs
0400312136



Ollie Gearing
0411720079

\$755,000

Welcome to your next chapter in this exquisite family home, nestled in the heart of a flourishing community. Situated in a sought-after neighbourhood known for its family-friendly atmosphere and convenient amenities, this residence offers the perfect blend of privacy and accessibility. As you approach, be greeted by the serene allure of lush gardens framing the driveway, inviting you to discover the charm and tranquility within. Positioned discreetly from the street, this home boasts a sense of exclusivity, providing a peaceful retreat from the hustle and bustle of everyday life. Prepare to embark on a journey of comfort and sophistication in this idyllic haven, where every detail is crafted to accommodate the needs and desires of modern family living.

The Features:- 4 bedrooms - Dual living areas - ideal for growing families - Air conditioning and ceiling fans throughout the home - Modern kitchen with stainless steel appliances & breakfast bar - 2 bathrooms, ensuite to main - Outdoor entertainment area / deck - Plenty of room for vegetable gardens and chicken coop - 2 car garaging- Side to rear access to yard - Approx. 1,050sqm land

The Location:- Approx. 4mins drive to Rutherford or Aberglassyn Shopping Complexes - Approx. 4mins drive to Rutherford Public | 3mins to Rutherford Technology High School - Approx. 4mins drive to Max McMahon Oval / Sporting fields - Approx. 3mins drive to Rutherford Hotel | 4mins to Club Maitland City or The Bradford Hotel

Whether it is a quality family home, easy care lifestyle with great access to amenities or a growing family friendly suburb, we are sure that you will enjoy your new abode at 25 Mileham Circuit.