

25 Principal Drive, Wyndham Vale, Vic 3024

House For Sale

Thursday, 14 December 2023



25 Principal Drive, Wyndham Vale, Vic 3024

Bedrooms: 4

Bathrooms: 2

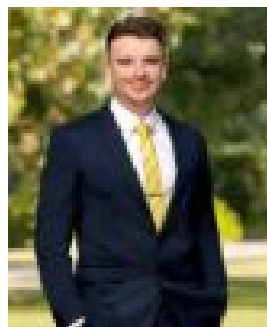
Parkings: 2

Area: 400 m2

Type: House



Alex Krnjeta
0399740000



Aydan Matejin
0399740000

\$580,000 - \$620,000

Contemporary Family Living at its Finest: Newly Built Haven by Ray White Werribee - 25 Principal Drive, Wyndham Vale
We at Ray White Werribee are thrilled to introduce this newly constructed haven, representing the perfect blend of modern comfort and convenience. Situated in close proximity to Wyndham Vale Train Station, shopping centres, childcare facilities, and esteemed schools, 25 Principal Drive offers a haven for contemporary family living. This four-bedroom, two-bathroom residence with a double garage is designed to accommodate the modern family's needs. The master bedroom boasts a full ensuite and a walk-in robe, while the remaining three bedrooms are well-appointed with built-in robes, ensuring ample storage space for everyone. Internal access from the double remote garage adds convenience, leading you to a welcoming formal lounge area down the hallway. The heart of this home lies in its kitchen, seamlessly connected to the meals and living area. Enjoy the culinary delights prepared in this modern kitchen while overlooking the outdoor undercover alfresco, an ideal setting for year-round family gatherings and barbecues. Thoughtfully appointed, this property features essential elements for comfort, including ducted heating, a split air conditioning system, downlights, fans, and more, ensuring a cosy and inviting atmosphere for every season. This is an opportunity not to be missed. Book an inspection ASAP with Aydan from Ray White Werribee to secure your place in this newly built family haven before it's gone!