

25 Sorell Street, Bridgewater, Tas 7030

Sold Residential Land

Wednesday, 13 December 2023



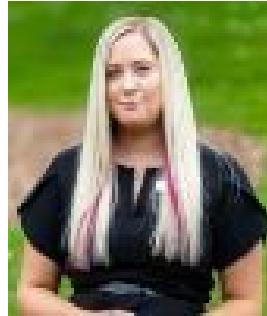
25 Sorell Street, Bridgewater, Tas 7030

Area: 8481 m2

Type: Residential Land



Jeff Hamilton
0404888538



Jessica Frost
0457123101

Contact agent

- Large block 8,481m² (approx.)- Opportunities to build (STCA)- Close to local amenitiesThinking of building? Or are you a developer? Then this could be just what you have been waiting for! We are delighted to present to you an exciting and lucrative chance for you to own a large block of 8,481m² (approx.) in the heart of Bridgewater. This is not just an investment; it is a chance to build your dream home or potential for development (STCA).Offering multiple opportunities, with its vast land size and a section of the property being heritage zoned, with an opportunity to rebuild something special or build elsewhere on the property the decision is yours.The suburb of Bridgewater offers; easy access to public transport, nearby schools, shops, supermarkets, doctors, chemists and Cafes, everything you need at your fingertips to live comfortably.This property is sure to be popular, so contact us today to avoid missing out.The information contained herein has been supplied to us and we have no reason to doubt its accuracy, however, cannot guarantee it. Accordingly, all interested parties should make their own enquiries to verify this information.