

25 The Esplanade, Marion Bay, SA 5575

Residential Land For Sale

Wednesday, 12 June 2024



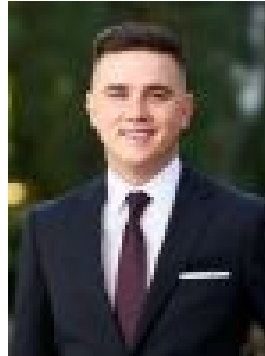
25 The Esplanade, Marion Bay, SA 5575

Area: 672 m2

Type: Residential Land



David Upadhyay
0469003052



Tristian Kennedy
0432898363

\$330,000 - \$360,000

672m² (approx) of the Yorke Peninsula moments from the sand - 25 The Esplanade offers a once-in-a-lifetime opportunity to secure your own piece of Marion Bay and create something magical. This prime address is perfect for disconnecting from the world, decompressing, and forging cherished memories with your nearest and dearest. This flat block is the ideal allotment to start building your dream, whether it's an obsession-worthy holiday home, a long-awaited sea-change, or a clever short-stay investment (STCC). It's sure to be something incredible. A short walk along the sand brings you to the heart of Marion Bay, where you can stroll the jetty, visit friends in town, or greet the locals. The General Store and Tavern are ready to supply you with necessities and pub meals. Situated on the doorstep of world-class surf, sun, and sand, Innes National Park offers endless opportunities for exploration before returning to your private haven. Whether you're planning a dream holiday home, a permanent sea-change, or a lucrative short-stay investment, this property offers boundless potential (STCC). Your piece of heaven, certain to be a source of joy for generations to come - get ready to start dreaming! Disclaimer: As much as we aimed to have all details represented within this advertisement be true and correct, it is the buyer/ purchaser's responsibility to complete the correct due diligence while viewing and purchasing the property throughout the active campaign. Property Details: Council | YORKE PENINSULA COUNCIL Zone | Rural Settlement (Z5414) - RuS Land | 672sqm (Approx.) Council Rates | \$TBC pa Water | \$TBC pq ESL | \$TBC pa