

25 Winton Drive, Fraser Rise, Vic 3336

House For Sale

Tuesday, 9 April 2024

25 Winton Drive, Fraser Rise, Vic 3336

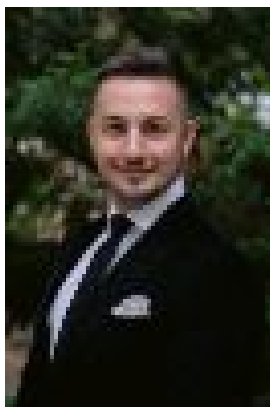
Bedrooms: 3

Bathrooms: 2

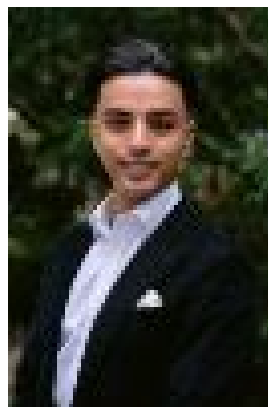
Parkings: 2

Area: 302 m2

Type: House



Reece McKechnie
0487408771



Tyson Cardamone
0411462539

\$600,000 - \$660,000

Ideally located within the coveted Botania community, on offer is a beautifully appointed, two-year young family home, enjoying a premium standard of living in a rapidly developing location, effortlessly melding tranquility with convenience. Making a striking first impression, the Hamptons-inspired facade surrounded by a neatly manicured front yard greets you, beckoning you inside. Set atop beautiful timber flooring, the home begins with a traditional entry flowing through the home as a central spine, culminating in the open-plan living and dining zone. Enjoying distinct spaces for both living and dining, creating an elevated everyday experience, while making a seamless transition outdoors to the secluded rear yard. Soak up the sun in the warmer months on the deck, perfect for alfresco dining and long summer barbecues. Superbly appointed, the premium kitchen showcases quality stainless steel appliances, including 900mm gas cooktop, under-bench oven, and dishwasher, complemented by a deep double sink and an abundance of storage throughout. Completing the picture, the waterfall breakfast bar with feature pendant lighting creates an informal eating space, or can be utilised as a centrepiece to a buffet-style occasion. With a total of three spacious sleep sanctuaries throughout, each space enjoys plush carpet underfoot and maximises rest and rejuvenation for guests and occupants alike. The palatial master suite is fitted with a spacious walk-in robe and private ensuite, while bedrooms two and three are each bolstered by a built-in robe with plenty of storage. Whether it's time to get ready for the day or unwind at the end of the week, the central sparkling bathroom ticks all boxes in terms of elegance and practicality. Taking a contemporary approach to design, matte black tapware and accents are offset against delicate terrazzo floor and wall tiling. Comprising a deep, freestanding tub, glass shower and vanity with built-in storage, plus conveniently located separate toilet, coupled with the shower, vanity and sleek toilet in the ensuite, ensuring plenty of space throughout. Other features include a double lock-up garage with internal and rear-yard access, fully fitted laundry, ceiling fans to all bedrooms, water tank, and ducted heating paired with evaporative cooling and reverse-cycle split system units for year-round comfort. Perfectly positioned, enjoy living within walking distance to Friendship Place Playground and upcoming amenities within Botania. Situated only a short drive from Deanside Kindergarten and Primary School, and the long-established communities of Caroline Springs and Taylors Hill, providing access to CS Square Shopping Centre, Taylors Hill Village, an excellent range of educational institutions from early learning through to secondary school. Proximity to both the Western and Calder Freeways provides ease of access to the city, airport, and onto regional Victoria.