

**252 Lieutenant Bowen Drive, Bowen Mountain,
NSW 2753**



Sold House

Friday, 2 February 2024

252 Lieutenant Bowen Drive, Bowen Mountain, NSW 2753

Bedrooms: 3

Bathrooms: 2

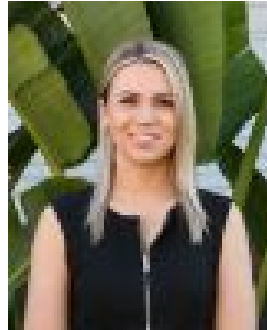
Parkings: 3

Area: 1530 m2

Type: House



Cindy Cash
0245713000



Fallon Quigley
0452159080

\$895,000

Adjoining the World Heritage-Listed Blue Mountains National Park on a 1,530sqm parcel of land is this recently renovated family home. As brilliantly functional as it is unforgettably stylish, the home features a striking split-level living and dining area with a 3m vaulted ceiling to the lower level with skylights and pendant lighting. The living room is a cozy space to enjoy with a custom granite and marble slow combustion fireplace and floating entertainment unit. The master bedroom is complete with pendant lighting, a fitted walk-in wardrobe and stylish ensuite. The two additional bedrooms are both serviced by the main bathroom with a dual basin vanity and free-standing bath. Additional internal features include floating flooring and tiles, 140mm skirting boards, ducted air conditioning, solar power and sheer linen curtains throughout. Externally, the property offers a landscaped fully fenced front yard with a spotted gum deck as well as a rear entertaining area, large grassed areas, established trees and a firepit area. For those with multiple vehicles, there is ample off-street parking as well as drive through side access to a 6mx7m shed with power.

- Linnen sheer curtains, floating floorboards and tiles and 140mm skirting boards throughout
- 14.5kW ducted air conditioning system, 6kW solar system
- Living room with a custom granite and marble slow combustion fireplace and floating entertainment unit
- Open plan kitchen and dining room with a 3m vaulted ceiling, two skylights, pendant lighting and 7.1kW split system air conditioner
- Kitchen featuring a custom timber island bench, farmhouse sink and Fisher and Paykel appliances including a 900mm gas cooktop, electric oven and integrated dishwasher
- Walk in pantry with an appliance cupboard and additional storage
- Master bedroom with pendant lighting, fitted walk in wardrobe
- Master ensuite with a rain shower head and stone vanity with a counter top basin
- Two additional bedrooms with built in wardrobes
- Family bathroom with plantation shutters, free standing bath, custom timber vanity with dual counter top basins and walk in shower
- Fitted laundry with additional toilet
- Undercover entertaining area with pendant lighting
- Drive through single carport to a 6mx7m shed with one automatic door and concrete floor
- 35,000L concrete water tank + 2x 5,000L tanks at the rear of the shed
- Landscaped front yard and spotted gum front deck, lighting throughout
- Fire pit area, fully fenced yard into three areas, ample lawn areas
- Established gardens including snow pears, flowering plum trees and an orchard including lemon, mandarin and orange trees
- Rear access to multiple bushwalking trails within the Blue Mountains National Park

All information about the property has been provided to Ray White by third parties. Ray White has not verified the information and does not warrant its accuracy or completeness. Parties should make and rely on their own enquiries in relation to the property.