

25A Ormond Street, Pascoe Vale, Vic 3044

House For Sale

Tuesday, 30 April 2024



25A Ormond Street, Pascoe Vale, Vic 3044

Bedrooms: 4

Bathrooms: 2

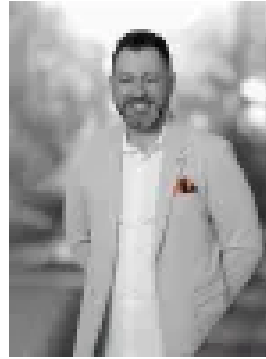
Parkings: 2

Area: 363 m2

Type: House



Marwan Abdulwahed
0420647396



Frank Antonello
0404999064

\$1.2m - \$1.3m

Discover the essence of modern living at 25A Ormond Street, Pascoe Vale. This brand-new, single-level home features four spacious bedrooms, two beautifully appointed bathrooms, and a versatile study-ideal for a home office. The meticulous attention to detail is evident in the top-notch finishes throughout, including an indoor atrium and strategically placed skylights that bathe the interiors in natural light. Step outside to a private courtyard, perfect for both relaxation and entertaining. Located within the zone for Strathmore Secondary College and close to schools, cafes, shops, parklands, and public transport, this property is a true gem in a sought-after Melbourne suburb. Don't miss your chance to call it home. Make your move today - Contact C+M Residential.. 'Helping You Find Home..' **THE UNDENIABLE:** • Brick single level side by side house • Built-in 2024 approx. • Land size of 363m² approx. • Building size of 24sq approx. • Foundation: Concrete slab **THE FINER DETAILS:** • Kitchen with 900mm stove top, dual wall oven & a dishwasher, stone benchtops, Island bench with waterfall edging, skylights, walk-in pantry, ample cupboard space, finished with engineered flooring • Sizeable open-plan meals & living zone with built-in TV unit, all with engineered flooring • Study/Home office with engineered flooring • 4-Bedrooms with BIRs & carpeted flooring, master with ensuite & WIR • 2-Bathrooms with shower, bathtub to main, single vanity, combined toilet & floor to ceiling tiles • Separate laundry with single trough, cupboards & benchtop space, plus rear access • Ducted heating & cooling plus a stunning fireplace • Additional features include zoned to Strathmore Secondary College, high ceilings, cathedral ceiling, window furnishings, indoor atrium, plus more • Single dwelling with landscaped gardens, garden beds, lawns, decking, garden shed & water tank • Single remote garage with rear & internal access, plus driveway for additional car • Potential Rental: \$750 - \$800 p/w approx. • Body Corp/Strata Insurance: N/A **THE AREA:** • Walk to Cumberland Rd, Essex St & Derby St shopping & café strips. • Pascoe Vale & Merlynston train station & bus hub • Surrounded by parks, reserves & schools • Only 11.5km from the CBD with easy City Link, Ring Road & airport access • Zoned Under City of Merri-bek - Neighbourhood Residential Zone **THE CLINCHER:** • Strathmore Secondary College zone is always a huge bonus • Experience attention to detail in this low-maintenance, exquisitely designed modern home **THE TERMS:** • Deposit of 10% • Settlement of 30/45/60 days Secure your **INSPECTION** Today by using our booking calendar via the **REQUEST INSPECTION** button... *All information about the property has been provided to C+M Residential by third parties. C+M prides itself on being accurate, however, has not verified the information & does not warrant its accuracy or completeness. Parties should make & rely on their own inquiries in relation to this property. Marwan Abdulwahed: 0420 647 396 Frank Antonello: 0404 999 064