

**26/2 Bingham Street, Schofields, NSW 2762**

**Apartment For Sale**

Thursday, 18 April 2024



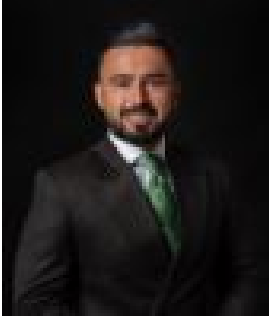
26/2 Bingham Street, Schofields, NSW 2762

**Bedrooms: 2**

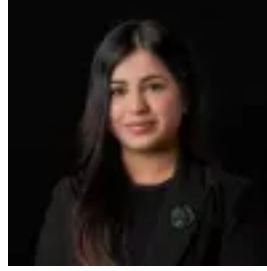
**Bathrooms: 2**

**Parkings: 1**

**Type: Apartment**



Amit Kumar  
0288964336



Siya Sachdeva  
0288964336

**\$550,000 - \$595,000**

Within one of the most highly sought-after parts of Schofields and situated within short proximity to Schofields Train Station and all local and desired amenities, this apartment boasts an ultra-convenient lifestyle and has something that the entire family will love. This home boasts a spacious open plan layout with the front facing kitchen effortlessly coming from the living and dining area. Natural light flows seamlessly between spaces and out through glass sliding doors of both extra-large balconies, which creates a perfect blend of indoor and outdoor entertaining areas. The modern kitchen features quality stainless steel appliances, stone benchtops, burner gas cooktop and 600mm oven, a dishwasher, tiled splashbacks, an eat-in breakfast bar as well as plenty of storage space. Accommodation comprises two good-sized bedrooms, both with spacious built-in wardrobes. The main bedroom has a private ensuite bathroom and the second bedroom is located directly adjacent to another full bathroom. Both bathrooms have quality inclusions, including floor-to-ceiling tiles, as well as an abundance of storage space. Both bedrooms also have access to a balcony at the rear of the apartment. Other features:- LED downlights throughout- Split system airconditioning - Two balconies, one sun-drenched with access from living areas, and one with access from both bedrooms- Modern contemporary design- Secure complex- Includes personal storage cage- One parking space for the apartment Location highlights- 5 minutes walk to Schofields Train Station and Schofields Shopping Village- 5 minutes drive to the premium Galungara Public School- 8 minute drive to Tallawong Metro Station and on-demand bus service available- 10 minute drive to Rouse Hill Town Centre and the upcoming Rouse Hill Hospital- Surrounded by multiple parks- Reasonable commute to Sydney CBD Disclaimer: All information contained herein is obtained from property owners or third-party sources which we believe are reliable. We have no reason to doubt its accuracy, however we cannot guarantee it. All interested person/s should rely on their own enquiries.