

26/8-10 Browne Parade, Warwick Farm, NSW 2170

CENTURY 21

Unit For Sale

Wednesday, 6 December 2023

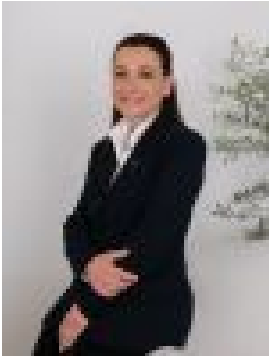
26/8-10 Browne Parade, Warwick Farm, NSW 2170

Bedrooms: 2

Bathrooms: 1

Parkings: 2

Type: Unit



Sonia Poulos
0296015944

\$480,000 to \$510,000

An apartment of house like proportions and featuring full brick construction and high ceilings throughout. Located in the most popular and ultra-convenient part of town just moments to all amenities & lifestyle options. * 2 bedrooms with built in robes, S/S air conditioning to main * Spacious living area with S/S air conditioning * Modern kitchen with granite bench tops, S/S appliances & gas cooking* Generous sized balcony with pleasant outlook* Double garage in secure basement * Located on the top floor with lift access* Internal Laundry, 2nd W/C, Total area 150m2 * Currently returning \$480.00p.wNB: PHOTOS TAKEN PRE TENANCYDISCLAIMER: While Century21 Combined Liverpool has made every effort in preparing this information and used their best endeavours to ensure that the information contained is true and accurate, we accept no responsibility and disclaim all liability in respect of any errors, inaccuracies or misstatements contained herein. Century21 Combined Liverpool encourages and advises all prospective purchasers to make their own inquiries in order to verify the information contained herein.