

26 Aitken Avenue, Queenscliff, NSW 2096



Sold House

Friday, 8 September 2023

26 Aitken Avenue, Queenscliff, NSW 2096

Bedrooms: 4

Bathrooms: 3

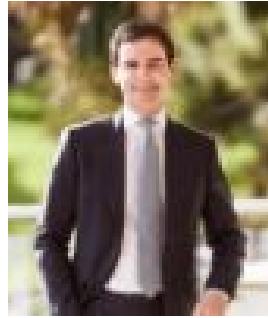
Parkings: 3

Area: 519 m2

Type: House



Cherie Humel
0299773300



Jonathan Morton
0299773300

\$3,500,000

Set directly opposite lagoon-front reserve in an exclusive beachside cul-de-sac, this versatile family residence is simply brimming with potential and possibilities. Poised above the street with dreamy leaf-filtered views over Manly Lagoon to an expansive district backdrop, the comfortably modern full brick residence features generous living spaces and terraces with views on both levels plus a near self-contained whole floor retreat. Ripe for renovation or a premium site for a rebuild (STCA), it is secluded in one of the area's most sought-after pockets within footsteps of the grassy reserve lining Manly Lagoon and a short stroll to express city buses, parks, tennis courts and Queenscliff Beach. * A sanctuary treasured by the one family for the past 34 years* Set opposite Aitken Reserve on the shores of Manly Lagoon* Generous living/dining plus sunroom/office with leafy views* Easy flow to a terrace with leafy vistas and lagoon cameos* Modernised kitchen, electric stove and s/steel dishwasher* Large sunny bedrooms, two have built-ins, main has ensuite * Ultra-modern main bathroom, large laundry with storage * Whole floor near self-contained one bedroom retreat * Retreat has a living area, modern kitchenette and bathroom* The extensive lower terrace showcases tranquil leafy vistas * Sunny north facing pool, terrace and cabana at the rear * The elevated pool area reveals lagoon and ocean outlooks * High ceilings, timber floors, fixed gas heater in living room* Footsteps to tranquil lagoon parkland with a playground* Five minute stroll to Queenscliff Beach or express city buses* Seven minute wander to Freshwater Beach and Village * Short level walk to Harris Farm and Manly Aquatic Centre * Easy near level bike ride to Manly Village, Beach and Wharf* Triple lock-up garage, set on a prime 519sqm parcel of landCouncil: \$3,206pa approxWater: \$693pa approx