

**26 Aldon Crescent, Blackalls Park, NSW 2283**

**Avery**

**Sold House**

Monday, 6 November 2023

26 Aldon Crescent, Blackalls Park, NSW 2283

**Bedrooms: 4**

**Bathrooms: 2**

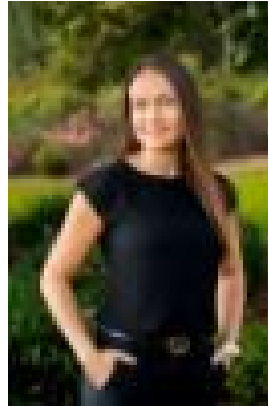
**Parkings: 3**

**Area: 571 m2**

**Type: House**



Craig Avery  
0249591677



Charlotte Nelmes  
0413922256

**\$935,000**

Nestled in a peaceful enclave, this hidden gem seamlessly connects to a lush bush reserve, nearby to the ever-popular Greenway Track for leisurely strolls and bike rides and offering easy access to the shallow waters of Lake Macquarie for your kayaking adventures. With nature embracing you from two sides and just one friendly neighbour to the south, 26 Aldon Crescent promises a peaceful and inviting escape for those in pursuit of tranquillity and relaxation, all while Toronto's vibrant lakeside dining and shopping is a mere five-minute drive away. This four bedroom residence is thoughtfully laid out across two inviting levels. The master bedroom with walk-in robe and ensuite resides on the ground floor. Upstairs, the focus shifts to family, with a spacious open-plan lounge, dining, living, and kitchen area that beckons everyone to come together. You'll also find a generous verandah, perfect for alfresco entertaining, with the bush as your soothing backdrop. Three additional bedrooms are grouped together, along with a family bathroom. Your parking needs are well taken care of, thanks to two separate garages and a convenient carport. Blackalls Park offers a delightful array of amenities, from a local shopping centre and schools to parks and recreational spaces. The nearby Blackalls Park Foreshore Reserve invites you to enjoy leisurely picnics, scenic strolls, and a variety of water-based activities. This peaceful enclave is where nature meets convenience.

- Dual level family home on 571sqm block with bush reserve on two sides
- Open plan living with timber floors, and a/c and a winter fire for year round comfort
- Timber and granite kitchen with electric cooking and dishwasher
- Effortless connection onto a tiled verandah for easy indoor/outdoor entertaining
- All four bedrooms, main on ground floor, fitted with built-in/walk-in robes
- Main bathroom with bath, shower, separate w/c, master ensuite, 3rd w/c in garage
- 2 mins to Fassifern Train Station, 33mins to Newcastle, 75 mins to Sydney
- 850m - Charlton Christian College, 1400m - Blackalls Park Public School, 3.6km - Toronto High, 6km - St Paul's Catholic College

Avery Property Professionals are proud to present this home to the market. Please contact Craig Avery or Charlotte Nelmes today to secure your inspection. Disclaimer: We have obtained this property information from sources we believe to be reliable; however, we cannot guarantee its accuracy. Prospective buyers are advised to carry out their own investigations.