

26 Aspect Drive, Keysborough, Vic 3173

House For Sale

Wednesday, 29 November 2023



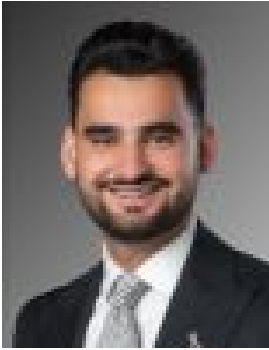
26 Aspect Drive, Keysborough, Vic 3173

Bedrooms: 4

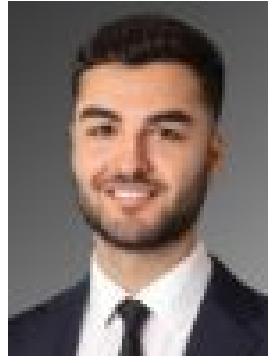
Bathrooms: 2

Parkings: 2

Type: House



Ozan Kanbur
0403644379



Emrah Dilbaz
0422054302

\$1,100,000 - \$1,150,000

Effortlessly stylish and undeniably sophisticated, this beautiful four-bedroom, two-bathroom home is a residence that will comfortably take you through all stages of family living. With vast open plan spaces, a choice of living areas upstairs and down, plus a fabulous alfresco setting everyone can enjoy, it is matched by a family-friendly location near quality primary and secondary schools, parklands, public transport and shopping precincts – daily living has never been so effortless. Beyond its contemporary facade, the home opens to warm and welcoming interiors enhanced by neutral wide-board flooring, which flows seamlessly through the ground floor accommodation from the front home office all the way to the rear open-plan living and dining area. The heart of the home showcases sweeping glass windows that frame outdoor views, and rear parkland vistas centred around a bespoke kitchen. A waterfall-edged island benchtop, quality stainless steel appliances, glass window splash-back, and a well-appointed butler's pantry set the stage for culinary excellence. Ascend to the top floor, where a sun-filled retreat awaits, providing a rejuvenating space for relaxation. All four spacious bedrooms feature built-in robes and share a central bathroom with a bath and separate W/C. Positioned towards the front, an enviable master retreat beckons with a peaceful retreat area, a spacious walk-in robe, and a luxurious dual vanity ensuite with an oversized shower, bath, and W/C. Step outside to a covered alfresco, creating the perfect venue for hosting gatherings and family BBQs. Venture further to discover low-maintenance concrete areas that wrap around the property, complemented by ample lawn space catering to both children and four-legged friends. Luxury appointments include a full laundry with external access, under-stairway storage, ducted heating and a double remote garage with internal and rear yard access to complete this offering. With proximity to Keysborough South Shopping Centre, Keysborough Gardens Primary School, within easy reach of the prestigious Haileybury, Lighthouse and Sirius Colleges, Parkmore Shopping Centre and the Eastlink Freeway for an easy city commute during the week, plus the Peninsula Link for the perfect weekend escape.