

26 Bailey Crescent, North Epping, NSW 2121

Sold House

Thursday, 12 October 2023



26 Bailey Crescent, North Epping, NSW 2121

Bedrooms: 4

Bathrooms: 3

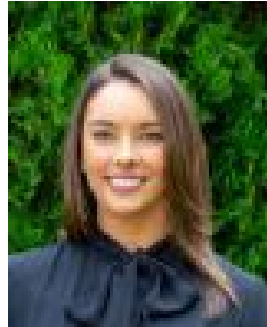
Parkings: 1

Area: 967 m2

Type: House



Allison Mifsud
0405138408



Danielle Jenkins
0459341200

Contact agent

Nestled on the North Epping Peninsula sits your dream family haven! This spacious retreat inspired home offers the perfect blend of comfort, functionality, and entertainment. Situated on a large level block of approx 968sqm, this property is designed to accommodate your family's every need. For those who work from home, you'll love the dedicated home office that provides a peaceful and productive environment. Additionally, there is a freestanding studio/entertaining cabana with wet bar and bathroom ready for you to adapt to your needs.* Sprawling large level yard with enough room to add a pool* Master suite with cathedral ceilings boasts a luxurious ensuite and WIR* Two additional renovated and modern bathrooms* Grand formal lounge room with oak flooring* Dramatic gas kitchen with granite bench tops and walk in pantry* Impressive dining room leads to an additional living room, travertine flooring* Outdoor entertaining terrace with fireplace, and separate Gazebo* Private & level block size of approx. 968sqm,* Stroll to Epping North Primary school and village shops* Zoned for Cheltenham Girls, Epping Boys and Carlingford High schools* Central to Epping rail, bus, Macquarie Uni, Shopping and Business Park