

26 Bernhard Street, Paddington, Qld 4064

House For Sale

Tuesday, 30 April 2024



26 Bernhard Street, Paddington, Qld 4064

Bedrooms: 4

Bathrooms: 4

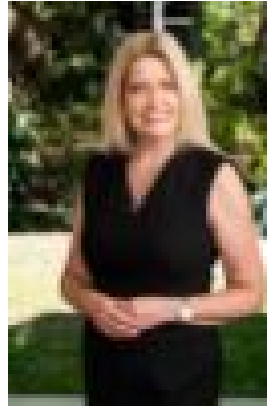
Parkings: 2

Area: 405 m2

Type: House



Glynis Austin
0403333013



Sue Cross
0421778245

Auction

AUCTION - Friday 31st May 2024 at 5pm On Site Beautifully elevated and just a stone's throw away from the vibrant Latrobe Terrace and Rosalie Village, this gorgeous residence epitomizes the essence of contemporary living overlooking City Views and delightful vistas over Paddington. Thoughtfully designed, every aspect of this home exudes sophistication and style, making a bold modern statement. From its elevated position, this beautiful home captivates with its clean lines and contemporary aesthetic. Designed with easy living in mind, the interior boasts custom joinery including display shelving, entertainment units, and built-in wardrobes seamlessly integrated with beautiful hardwood floors and expansive glass elements. The heart of the home is open plan, and features a large well-equipped kitchen with premium finishes such as Caesar Stone benchtops and top-of-the-line V-Zug and Miele appliances. Adjacent to the kitchen is a spacious living and dining area that effortlessly flows to the back deck then out to the meticulously landscaped and inviting gardens with built in seating and firepit, perfect for entertaining guests. This level further offers living and dining space from a large wide deck for access to gaze on the beautiful panoramic City and suburban views. The upper floor is also home to two light-filled bedrooms, including a main suite with a substantial wardrobe and en-suite adorned with European tiles and finishes. The entry level to the home provides 2 more bedrooms, with one bedroom being fully en-suited with access to a separate private outdoor sitting area. A large casual living room, bathroom, laundry and fully secure large 2 car garage. Features include:

- City Views and panoramic views over Paddington
- Well elevated, enjoying year-round breezes from multiple decks and entertaining spaces
- Spacious, open-plan layout with clean contemporary finishes throughout
- Chef's style kitchen with Caesar Stone benchtops and premium stainless-steel V-Zug and Miele appliances
- Living and dining areas seamlessly blending indoor with outdoors for alfresco living
- Four bedrooms (2 en-suited) including a luxurious main suite with walk-in wardrobe and en-suite, 4 bathrooms
- Custom bespoke joinery including display shelving, entertainment units, and built-ins
- Ducted Air plus split systems, ceiling fans, intercom, solar and water tank
- Secure and gated
- Lush fully landscaped and low-maintenance 405sqm garden

Located in one of the best streets in Paddington, this desirable residence offers easy access to public transport, bus and a 20 minute walk to a train with dining options along Latrobe Terrace and Rosalie Village. Set in the Milton State School Catchment and only minutes to Brisbane's Inner City private Schools, BGS, BGGs & Terrace, this beautiful, fully realized home has been perfectly designed for you to live your rich urban lifestyle, while offering convenience, luxury, and low maintenance living. This home is also a perfect lock up and go! Can you imagine walking to the game at Suncorp? From this address its easy. This location will see you access both North and South coasts as well as the Western Freeway. With the ICB so close your next trip from Brisbane's airport will see you home in no time. A wide variety of hubs are within a few minutes' drive, Toowong Village, Ashgrove Village and Newmarket as well as The Barracks on the City's fringe. This beautiful home is perfect for singles, couples or small families, come take a look - enquire today or for more information call 0403 333 013 or 0421 778 245! (Whilst all due diligence has been taken in the preparation of this document, there is no guarantee as to the accuracy of information provided. It is recommended that purchasers conduct their own enquiries and searches prior to purchase).