

# 26 Bonza Circuit, Clyde North, Vic 3978



## Sold House

Tuesday, 9 April 2024

26 Bonza Circuit, Clyde North, Vic 3978

**Bedrooms: 5**

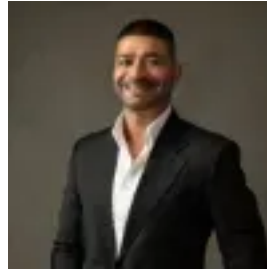
**Bathrooms: 2**

**Parkings: 2**

**Type: House**



Gary Singh  
0359913888



Sanjay Singh  
0359913888

**\$870,000**

Sheridon Homes' brand-new double-story home in the sought-after Smith's Lane Estate offers a comfortable and spacious living experience. This property promises comfort and elegance with four generously sized bedrooms, two bathrooms, and a double-car garage. The ground floor of the house includes an entrance study and a large theater room or bedroom with plenty of entertainment space. You are then led to the open-plan living area, which includes the meals and family room. The ground-floor kitchen is a standout feature, with a grand design and 60mm stone benchtops. It has plenty of cupboard and bench space for storage, as well as a convenient walk-in pantry. The upper level's main bedroom is tucked away and features a double vanity with 40mm stone, wall-to-wall tiles, and a tile shower base. There is also a separate toilet for your convenience. The remaining three bedrooms on this floor all have robes and plenty of storage space. A generously sized family retreat is also located upstairs, providing an additional area for relaxation or leisure activities. This house has both internal and external space, making it an excellent choice for a family seeking comfort and room to grow. The main features of the property are:

- Brandnew Built Built by Sheridon Homes
- 5 bedrooms
- 2 bathrooms
- Master bedroom with WIREnsuite with 40mm stone benchtop and dual vanities
- WIR to bedroom 2 and built-in robes in the remaining bedrooms
- Theatre room/5th bedroom
- Living room
- Dining room
- Retreat/Activity room
- Kitchen with stone benchtops
- WIPQuality appliances
- Laundry
- Linen cupboard
- Fully concrete on sides
- 2740mm ceiling to ground floor and 2590mm ceiling to first floor
- 2340mm High doors
- Down-lights
- Exposed aggregate driveway up to 36 m<sup>2</sup>
- Concrete all around the house
- Laminate flooring to ground floor
- Carpet upstairs
- Low-maintenance gardens
- Ducted heating
- Evaporative cooling
- Dishwasher
- Exposed aggregate driveway (up to 36 m<sup>2</sup>)
- Omega microwave and trim kit
- Omega 600mm dishwasher, ODW700X, including cold water connections and power point
- Block out roller blinds to standard home design
- 1600mm wide double basin vanity unit to ensuite
- 60mm Caesarstone® kitchen benchtop with 60mm edge
- 2no. banks of 2 pot drawers up to 800mm wide with soft closers to kitchen
- 450mm U-shaped bulkhead to family.
- 2400 x 3600 stacker doors
- 2340mm high x 1020mm wide standard Hume XN1 front entry door
- 1200x900mm shower with tiled base
- Ceiling height: 2740mm; ground floor
- Ceiling height: 2590mm on the first floor
- 400mm (h) x 600mm (w) tiled niche to shower
- Chattels: All Fittings and Fixtures as Inspected as Permanent Nature
- Deposit Terms: 10% of Purchase Price
- Preferred Settlement: 30/45/60 Days
- Located in close proximity to all amenities, Walking distance to estate's cafe, adventure park and neighbourhood park
- Primary & Secondary schools
- Clyde Grammar school
- Eden Rise shopping centre
- Clyde North shopping precinct
- Medical centres
- Hospitals
- Freeway and Highway
- Sporting facilities
- Ramleigh Reserve
- Cricket & Soccer Fields
- Casey RACE Recreation & Aquatic Centre
- Casey Indoor Sports Center
- Cafes & Restaurants
- Parks & Playgrounds

**PHOTO ID REQUIRED AT OPEN HOME** Every care has been taken to verify the accuracy of the details in this advertisement; however, we cannot guarantee their correctness. Prospective purchasers are requested to take such action as is necessary to satisfy themselves of any pertinent matters. The photo is for demonstrative purposes only. Please contact Gary for more information: 0402 206 604