

26 Dickson Street, Mount Waverley, Vic 3149



House For Sale

Tuesday, 28 May 2024

26 Dickson Street, Mount Waverley, Vic 3149

Bedrooms: 4

Bathrooms: 2

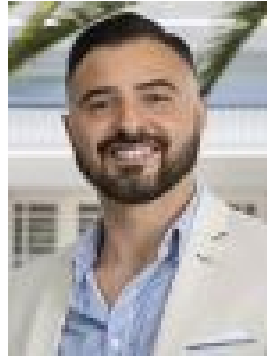
Parkings: 2

Area: 711 m2

Type: House



Robert Groeneveld
0404881634



Kamran Atai
0403628836

\$1.65m - \$1.8m

Spread over a stunning single level layout, this stylish residence is the epitome of modern family living from its intricate and detailed floor plan to its classy contemporary finishes and an abundance of outdoor space. Step inside to high ceilings and towering doors frames which occupy a formal entrance hall where timber style floors make their way into a light-filled open plan living, dining and quality kitchen precinct. With stone benches, stainless steel appliances, a feature Island bench and breakfast bar plus a spectacular Butler's pantry, the kitchen is a real highlight, overlooking plenty of space to convene with family and friends. Bedrooms with robes are housed away from the main living zones, the magazine worthy master has a walk-in robe, twin stone finished vanity and spa bath, while all have proximity to the matching main bathroom with shower and separate bath. Multiple sliding stacker doors connect cleverly to a magnificent covered alfresco entertaining area that not only incorporates strip heating and ceiling fans for added comfort, but provide the ideal vantage point to supervise the kids and pets exploring the lush, landscaped backyard. An oversized double garage, garden sheds, plenty of additional off-street parking, plantation shutters, hydronic heating and refrigerated cooling further contribute to a flawless family package that sits upon a well placed 711 sqm (approx.) block. Within walking distance to Mount Waverley Heights Primary School and the picturesque Scotchman's Creek Trail, close to Salesian College, the Mt Waverley Shopping Village, Mt Waverley Station and the Chadstone retail and entertainment mecca, as well as enjoying easy access to Huntingdale Rd, Stephenson Rd, Blackburn Rd, Waverley Rd, Ferntree Gully Rd and the M1 Freeway.