

# 26 Irvine Rise, Werribee, Vic 3030

## Sold House

Thursday, 10 August 2023



26 Irvine Rise, Werribee, Vic 3030

Bedrooms: 4

Bathrooms: 2

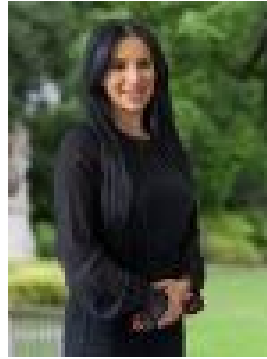
Parkings: 2

Area: 448 m2

Type: House



Dave Samarges  
0411292929



Bella Trifiro  
0402689014

**\$710,000**

This exquisite property located in the highly sought-after Harpley Estate of Werribee! Boasting a modern design and upgraded finishings, this four-bedroom home is perfect for families seeking luxury and comfort. The master bedroom is a true retreat, complete with a private ensuite and a walk-in robe. Three additional bedrooms offer plenty of space for the whole family or can be transformed into a home office or study area. The main bathroom is beautifully appointed with modern fixtures and fittings. The open-plan living and dining has an abundance of natural light seamlessly flows into the kitchen, creating a warm and inviting atmosphere for family gatherings and social events. The kitchen is a chef's delight, featuring stone benchtops, stainless steel gas cooking appliances, and a dishwasher. Prepare delicious meals with ease and enjoy the convenience of ample storage space and a functional layout. Step outside and be captivated by the backyard oasis. The alfresco area is perfect for outdoor dining and entertaining, while the grass area provides ample space for kids to play and explore. With a generous 448 square meter block, there is plenty of room for your family to enjoy outdoor activities and create lasting memories. Additional features of this stunning home include a double car garage, ducted heating and evaporative cooling, and upgraded finishings throughout, adding a touch of elegance and sophistication. Located in the prestigious Harpley estate, you'll enjoy the benefits of a vibrant thriving community with walking distance to the new and coming Harpley Town Centre to parks, playgrounds, St Josephs Primary School and Werribee Train Station. Don't miss out on the opportunity to own this exceptional display home. Contact us today to arrange a private inspection and secure your dream home in the Harpley estate of Werribee.