

# 26 Kuringgai Crescent, Noble Park, Vic 3174



## House For Sale

Friday, 1 December 2023

26 Kuringgai Crescent, Noble Park, Vic 3174

Bedrooms: 4

Bathrooms: 2

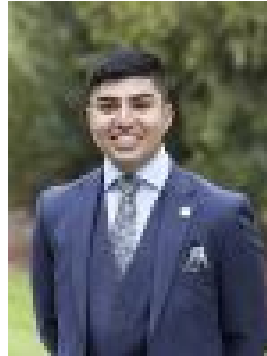
Parkings: 3

Area: 530 m2

Type: House



Chris Utley  
0395470000



Talha Mamsa  
0432598151

**Auction: \$800,000 - \$850,000**

On- Site Auction Saturday 16th December at 2pm. Contact Chris Utley on 0421 825 338 to arrange an inspection. Discover classic family charm in this spacious and well loved 4 bedroom family home. Full of opportunity and designed with family living in mind, this wonderful residence is set over 530m<sup>2</sup> of prime land in a quiet and tightly held location bordering Keysborough. Step inside and be greeted by a timeless elegance incorporating the perfect blend of style and functionality. The formal living area is warmly carpeted with a unique wood fireplace that exudes warmth and character, setting the tone for cozy family gatherings. The heart of the home is the central kitchen, boasting gas cooking, large sink, and an abundance of bench and cupboard space - a dream for any home cook. The well-designed floor plan seamlessly connects the kitchen to the adjoining dining area, overlooking a second living space that adds to the spacious feel of the home. Privacy is key in the master bedroom suite, featuring a large walk-in wardrobe and a private ensuite bathroom for a serene retreat. The three additional bedrooms are thoughtfully located near the central bathroom, ensuring convenience for the entire family whilst providing an opportunity for guests & extended family to have a private space to stay. The home offers a great balance of indoor and outdoor living. Entertain guests in the covered outdoor space, while the expansive grassy area provides an ideal playground for kids and pets to play. Secure and spacious off-street parking is provided with covered and lockable carport, adding an extra layer of security and convenience to your daily life. The location is second to none, with easy access to local amenities including Parkmore shopping centre, Corrigan- Rex preschool, Wallarano Primary School, Keysborough college as well as easy bus access to vibrant Noble Park main strip with its cafes, shops & updated train station. Don't miss this rare opportunity to make your mark on this classic family home - where classic charm, thoughtful design, and ample space come together to create a truly inviting living experience.