

26 Maher Close, Beecroft, NSW 2119



Sold House

Thursday, 24 August 2023

26 Maher Close, Beecroft, NSW 2119

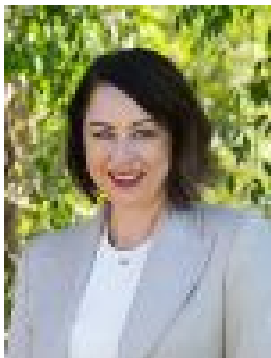
Bedrooms: 3

Bathrooms: 2

Parkings: 2

Area: 885 m²

Type: House



Belinda Hill

0294849300

\$2,380,000

This immaculate home has been exquisitely renovated to create an impressive oasis for families who desire a relaxed indoor/outdoor lifestyle. It's set on a vast 885sqm block, near Plympton Road shops, while zoned for Carlingford High and Roselea Public.- Huge open living and dining zones flows seamlessly outdoors- Immaculately crafted interiors showcase contemporary finishes- Bi-fold doors open to covered terrace overlooking the pool- Outstanding entertainers' pavilion with outdoor kitchenette- Island gas kitchen, Smeg appliances, bi-fold servery windows- Three deluxe bedrooms, two with built-ins, two bathrooms - Ducted air conditioning with four zones, Regency gas fireplace- Automatic blinds, wine cellar/bar, tiles and floorboards- Lock-up garage and carport, underhouse storage, garden shed- Fantastic choice for growing families and downsizers alike