

**26 Noble Avenue, Punchbowl, NSW 2196**



**Sold House**

Tuesday, 19 March 2024

26 Noble Avenue, Punchbowl, NSW 2196

**Bedrooms: 4**

**Bathrooms: 1**

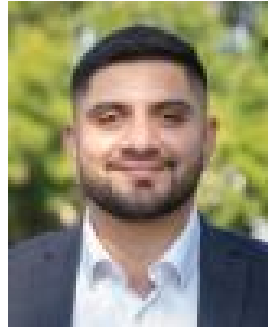
**Parkings: 2**

**Area: 499 m2**

**Type: House**



Mark Saleh  
0286685754



Ahmad Elfata  
0286685754

**\$1,281,000**

Elegantly updated to reveal a low-maintenance lifestyle, this versatile family home boasts a sought-after due-north aspect and features original timber floors, accentuating highlight windows, and soothing colour tones. Including a detached studio and guest bedroom, the property provides room for expansion, complemented by three bedrooms, a gourmet kitchen, and a spa bathroom. It is peacefully located on a tree-lined street and is a short stroll from Mount Lewis Park.- Leafy views create a sense of peace and privacy within the lounge/dining area- Child-friendly backyard with landscaped gardens, designated chicken space- Chic kitchen features an in-built wine rack, quality steel appliances and storage- Three double bedrooms are fitted with mirrored built-in robes and ceiling fans- Bedroom three enjoys access to a private balcony, additional fourth/studio bed- Designer bathroom enjoys chic floor-to-ceiling tiles, a spa bath and a shower- Air-conditioning, ceiling fans, downlights, timber floors and detailed cornices- Detached studio includes a laundry and bedroom, ideal for an office/guest bed- Extended driveway provides space for off-street parking, landscaped gardens- Located 1.2km from Punchbowl Station, diverse dining, gymnasiums and schoolsDISCLAIMER: While PACE Property Agents have taken all care in preparing this information and used their best endeavours to ensure that the information contained therein is true and accurate, but accept no responsibility and disclaim all liability in respect of any errors, inaccuracies or misstatements contained herein. PACE Property Agents urges prospective purchasers to make their own inquiries to verify the information contained herein.