

26 Ross Street, Woy Woy, NSW 2256



House For Sale

Wednesday, 12 June 2024

26 Ross Street, Woy Woy, NSW 2256

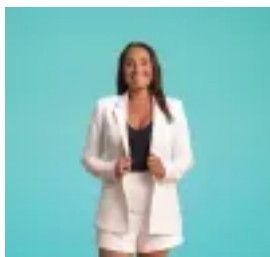
Bedrooms: 3

Bathrooms: 1

Parkings: 1

Area: 550 m2

Type: House



Chantel Laing

0243856423

For Sale

Investors, seize this opportunity! This classic brick and tile gem with solid foundations and a traditional layout is a standout in a quiet, highly convenient central location. Set on a sun-drenched level block, this home offers immediate functionality and immense potential for future enhancements. Whether you choose to enjoy it as is or bring your vision to life, this property is primed for value appreciation. Features include:- Three generous bedrooms (two with built-in robes, one with a freestanding full robe).- Spacious, functional kitchen with ample bench and cupboard space with a modern tiled splashback.- Dining/meals area flows seamlessly into the sunroom, which captures abundant natural light and offers a level rear yard backing a park reserve.- Fresh, bright bathroom with a bath and a separate toilet.- Timber floorboards under original carpet, ready to be revealed.- Generously proportioned main living/lounge area adjoins the meals/dining area.- Sunny, level, fully fenced backyard with mature gardens and lush green grass, providing plenty of space for kids and pets to play year-round.- Single oversized carport, two garden sheds for storage, and ample space to add double gates at the side of the property for a caravan, camper, or boat.- Current rental return of \$580 per week, occupying fantastic tenants.- Land size: 550sqm. Year Built: 1978. Council rates: \$1,802pa. Water rates: \$995pa.Extras: reverse cycle air conditioning, garden sheds, water tank, roof repointed and painted, bore water pump, veranda blinds. Located close to public transport, hospitals, sporting fields, restaurants, and cafes, with local shops, schools, and the train station within walking distance. This property won't last long! For more information, please contact Chantel Laing 0410 433 213.