

**26 Skyline Boulevard, Whitby, WA 6123**

THE AGENCY

**Sold House**

Wednesday, 8 November 2023

26 Skyline Boulevard, Whitby, WA 6123

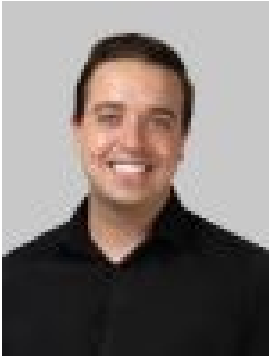
Bedrooms: 4

Bathrooms: 2

Parkings: 4

Area: 600 m2

Type: House



Ben Mathews  
0488997018

**\$655,000**

**\*\*\*UNDER OFFER BY THE MATHEWS TEAM - 0488 997 018\*\*\***Are you ready to elevate your lifestyle to new heights?! This immaculate and impressively sized 4-bedroom, 2.5-bathroom residence, crafted in 2016 by Home Group WA, awaits its new owners. Situated on a generous 600sqm block with side access, this stunning property offers a perfect blend of luxury, style, and functionality. Join us as we take you on a journey through this remarkable home.

**INSIDE**As you step through the large feature front door, a formal entry sets the tone for this elegant home. To the right, you'll discover a spacious activity room, ideal for kids to play or to be used as a separate living space. Three well-proportioned secondary bedrooms with built-in robes are also located on this side of the home as well as the powder room and main bathroom which exude modern sophistication, boasting sleek designs. Continuing through the home, you'll find a **MASSIVE** master bedroom that will leave you in awe. The master suite features an expansive ensuite with double basins, stone bench-tops, a double (dual entrance) shower with high-end resort style fittings and fixtures, and a luxurious standalone bath. The master also has a great size walk in wardrobe to finish it off. Exiting the master bedroom, a roomy walk-in linen closet offers excellent storage space, it's so large this closet looks like a small room on its own making it very handy indeed! The home also boasts a dedicated theatre room, thoughtfully designed with dark walls and well positioned down lights, making it the ultimate space for sports enthusiasts and movie lovers. The heart of the home is the large open-plan living/kitchen/meals area, ideal for entertaining. The kitchen is a chef's delight, equipped with high-end appliances, beautiful pendant lighting, and sleek stone bench-tops. The expansive living and dining space is perfect for family gatherings and friendly get-togethers. Tucked to the rear of the home, an additional scullery offers a convenient space to prepare while keeping the main kitchen spotless. The laundry, also discreetly located at the rear, ensures a tidy and functional living space.

**OUTSIDE**From the main living area, step into a spacious alfresco zone, currently used as a home gym but open to your imagination. This is the perfect area for outdoor living, where you can relax and entertain with ease. It also connects cleverly with the scullery making entertaining a breeze and the area would be perfect for building an outdoor kitchen should you wish to do so. Leading off the alfresco space is an additional grassed area and a paved zone, ideal for parking a caravan or boat. The convenience of drive-through side access adds versatility to the property. A small garden shed at the rear provides extra storage for tools and equipment. The striking front façade enhances the home's curb appeal, and a large extra height double garage is seamlessly integrated into the main structure while the custom built garden beds and awesome landscaping make for perfect presentation. The home has the added bonus of solar panels and zoned reverse-cycle air conditioning throughout for comfort and sustainability. The block size is 600sqm.

**INTERESTING NOTES** The free standing bath to the ensuite was at one stage planned to be a spa however plans changed. There is a tunnel under the tiles that pops out in the bottom of the vanity that allows for a spa to be fitted, and power point is in place at the bottom of the vanity as well for this reason. So should you wish to convert it to a spa – this would be a relatively straight forward task.

**WHERE IS IT LOCATED?** This exquisite home is situated in the newer suburb of Whitby, surrounded by other high-spec homes. You'll be just 8.6 kilometres from the Byford shopping precinct, 7.8 kilometres from Briggs Park, and a mere 2.8 kilometres from Mundijong Oval. The location is perfect for sports enthusiasts and families, with several sports clubs in the vicinity, including the renowned Serpentine Jarrahdale Cricket Club.

**WHAT TO DO NEXT** Don't miss this opportunity to make this stunning home yours. Join us for the home open on Saturday the 18th between 10:00am – 10:30am (at the advertised time on this portal) and experience the epitome of modern living in Whitby. Properties of this calibre don't last long, so contact The Mathews Team today - your dream home awaits – seize the opportunity now!

**Disclaimer:** This information is provided for general information purposes only and is based on information provided by the Seller and may be subject to change. No warranty or representation is made as to its accuracy and interested parties should place no reliance on it and should make their own independent enquiries.