

26 Sudbury Drive, Pimpama, Qld 4209



House For Sale

Thursday, 13 June 2024

26 Sudbury Drive, Pimpama, Qld 4209

Bedrooms: 4

Bathrooms: 2

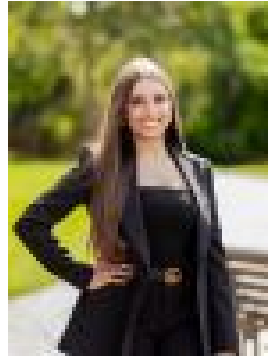
Parkings: 2

Area: 879 m2

Type: House



Jason Atkinson
0438690656



Mikayla Melhem
0415102030

Auction

Nestled within the highly sought-after Pacific Cove estate in Pimpama lies a sanctuary of modern living, where every detail has been meticulously crafted to offer the epitome of comfort and style. Set on a generous 879 square meter block, this immaculate home boasts a flawless floorplan that seamlessly combines space with functionality, presenting an irresistible opportunity that simply cannot be missed. Step inside to discover a gourmet's delight - a sprawling open-plan kitchen adorned with sleek electric stovetop and a convenient walk-in pantry, overlooking the spacious tiled living area bathed in natural light. With ducted air conditioning ensuring year-round comfort, this home exudes an atmosphere of effortless relaxation and enjoyment. Need a space to unwind or entertain? Look no further than the additional media room and office, providing ample room for both work and play. With 4 generously proportioned bedrooms and two luxuriously appointed bathrooms, this residence caters to every aspect of family living. But it doesn't stop there - the true highlight is just outside, where the oasis awaits. Step out into your very own private haven - an expansive undercover alfresco area to enjoy Gold Coasts beautiful breeze. Picture yourself enjoying delightful alfresco dining experiences or hosting leisurely weekend barbecues in this idyllic setting. Surveying your vast, fully fenced yard and the shimmering allure of your sparkling pool, it's undeniable that this outdoor sanctuary is poised to inspire envy in all who visit.

Features Include:

- Light filled open- plan kitchen with tasteful design, ample storage and an electric stove top
- Tiled, fully ducted living area overlooking the outdoor alfresco area
- Additional media room
- Extra office space
- Spacious master bedroom with ducted air, walk in wardrobe and private ensuite
- Three additional bedrooms with built in wardrobes and ducted air
- Two modern bathrooms
- Double lock up garage
- Large in ground sparkling salt pool
- Large, fully fenced yard with double side access and rear access to the cul de sac

Additional Features:

- Ducted air conditioning throughout
- NBN Ready!
- 10 KW Solar panels installed
- Garden shed
- 3 organic vegetable gardens
- North East facing
- Situated in a beautiful family-friendly neighbourhood

Pacific Cove is more than just a residential enclave - it's a lifestyle destination. Boasting a prime location within Pimpama, residents enjoy easy access to an array of local amenities ranging from top-notch schools, bustling shopping precincts, and a wide array of dining options. Beyond its modern conveniences, it is surrounded by picturesque parklands, offering ample opportunities for outdoor recreation and relaxation. Whether exploring the nearby beaches of the Gold Coast, enjoying a round of golf at one of the acclaimed courses, or simply unwinding in the serenity of its leafy neighbourhoods, it embodies the essence of modern living with a touch of suburban charm. With its thriving community and promising future developments, Pacific Cove truly stands as a place where residents can thrive and create lasting memories.

Disclaimer: This property is being sold by auction or without a price and therefore a price guide cannot be provided. The website may have filtered the property into a price bracket for website functionality purposes. Important: Whilst every care is taken in the preparation of the information contained in this marketing, Ray White will not be held liable for the errors in typing or information. All information is considered correct at the time of printing.