

26 Westminster Drive, Rowville, Vic 3178



Sold House

Thursday, 14 September 2023

26 Westminster Drive, Rowville, Vic 3178

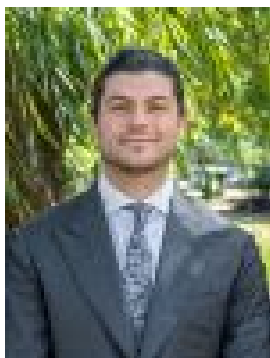
Bedrooms: 4

Bathrooms: 2

Parkings: 2

Area: 818 m2

Type: House



Rene Mawad
0403141596



Trent Bourne
0431325917

\$1,210,500

THE PROPERTYIdeally located in a leafy street in a family-focused neighbourhood, this spacious four-bedroom retreat offers an exceptional opportunity to secure your future family success. The property has been recently updated to suit modern day living. Designed for open plan ease, there are multiple living spaces to enjoy both formal and casual, from the large light-filled lounge upon entry, through the versatile dining room and on to the expansive family zone at the rear. Here large windows frame the lush lawns of the backyard, while sliding doors reveal a covered and paved alfresco, ideal for relaxed entertaining as you watch the kids and pets play. The well-appointed stone kitchen is sure to please the resident chefs, with quality appliances making mealtimes a breeze. Privately positioned at the front of the home, the luxe master flaunts a walk-in robe and chic ensuite, with three additional bedrooms boasting built-in robes. Rounding out the features, a standalone laundry with linen press storage, stunning family bathroom complete with bath, shower, vanity and separate toilet, and double lock-up garage.

THE FEATURES• Fully updated four-bedroom, two-bathroom family home on 818sqm (approx.)• Multiple living zones ideal for growing families• Master bedroom flaunts walk-in robe and chic ensuite• Stunning stone kitchen featuring new appliances, tiled splashbacks, and beautiful timber cabinetry• Three further bedrooms include built-in robe storage• Family bathroom with bath, shower, vanity & separate toilet• Large covered and paved alfresco ideal for entertaining• Double lock up garage with rear access• Dedicated laundry facilities• Ducted heating and evaporative cooling

THE LOCATIONPerfectly positioned close to all the modern conveniences you need, with Wellington Village Shopping Centre, Heany Park Primary and Rowville Secondary College just a pleasant stroll away, Liberty Avenue Reserve over the back fence, and Stud Park, Eastlink and a host of quality golf courses all nearby.

Onsite Auction Saturday 7th of October at 2:30pm