

2604/111 Mary Street, Brisbane City, Qld 4000



House For Rent

Thursday, 25 April 2024

2604/111 Mary Street, Brisbane City, Qld 4000

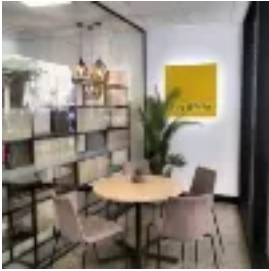
Bedrooms: 2

Bathrooms: 2

Parkings: 1

Area: 110 m2

Type: House



Ray White Inner Brisbane Apt Leasing
0736384660

\$980 Per Week

Applications submitted without inspection of the property will NOT BE PROCESSED. Click the "Book an Inspection Time" button to book a viewing time. This luxury two bedroom, two bathroom apartment is positioned in the heart of Brisbane's CBD in the newly built Mary Lane. This apartment provides superior living with floor to ceiling glass windows throughout maximising spectacular North East views so you can unwind in pure opulence. A balanced blend of form and function, Mary Lane's elegant features, flawless finishes and ability to capture breathtaking views makes it a desirable haven to escape to. Property Features; Two Spacious bedrooms master with ensuite bathroom Separate study or 3rd bedroom Generous open-plan living spaces Chef inspired kitchen fitted with high end Siemens gas appliances and stone bench tops Decorated with high quality Herringbone timber floors Expansive balcony with stunning North East views of City, Brisbane River & Story Bridge Zoned controlled ducted air conditioning throughout 2.7m high ceilings with floor to ceiling glass windows Walk in robe, ensuite with dual vanity and walk in shower with rain shower head Designated laundry room with ample storage Building Facilities; Resident only rooftop sky deck Infinity Pool and well equipped Gym Private residents lift from lobby Positioned high above "The Westin" hotel in Brisbane City with a collection of vibrant dining and entertainment destinations, this apartment provides effortless connection to a variety of 5-star amenities, while still enjoying the privacy of a separate lobby and secured lift access to your residence and the exclusive rooftop retreat.* To register your interest or book an existing inspection time please click the "Book an Inspection Time" button above and follow the prompts. If the inspection times listed are not suitable please click the 'times not suitable' button so that we may contact you to arrange an alternative inspection time. PLEASE NOTE if you do not register we cannot notify you of any time changes or cancellations While care has been taken in the preparation of these particulars; no responsibility is accepted for the accuracy of the whole or any part and interested persons are advised to make their own enquiries and satisfy themselves in all respects. PLEASE NOTE if you do not register we cannot notify you of any time changes or cancellations