

**2607/1 Almeida Crescent, South Yarra, Vic 3141**



**Apartment For Rent**

Tuesday, 14 May 2024

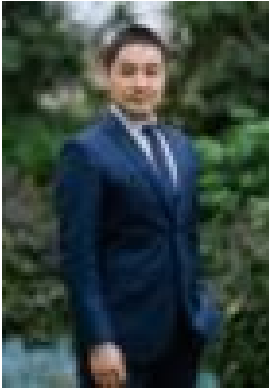
2607/1 Almeida Crescent, South Yarra, Vic 3141

**Bedrooms: 2**

**Bathrooms: 2**

**Parkings: 1**

**Type: Apartment**



Leslie Yin

**\$860 per week**

The word Luxury does not describe the lifestyle here. Imagine waking up with the view of Melbourne CBD, St Kilda Boulevard Business Precinct and the view of Port Philip Bay, also you have all sorts of amenities just downstairs. This amazing Two Bedroom Two Bathroom One car space apartment features:- The best unblock view in the building so far (26th Floor)- World-class facilities including Gym, Yoga Room, Gardens, BBQ facilities, Swimming pool, Business centre, Public Kitchen, A number of Lounges, Cinema, Games Room, Library etc.... you name it.- 24 hours security, Front desk and Concierge, and multiple entrances from both Toorak Road, and Chapel st.- Gaggenau Kitchen appliances.- Timber Flooring throughout the kitchen and living area. South Yarra Train Station is 2 minutes walk, and a number of tram options at the door front as well. Capitol Grand is Melbourne's first 6 Star Building. No more words are needed for this amazing building and the apartment. Inspection is sure to impress. Please call 0433 540 119 today to arrange a private inspection. Registration is a MUST by email or text before coming to inspection. PHOTO ID IS REQUIRED AT ALL OPEN FOR INSPECTIONS.