

**2607/245 City Road, Southbank, Vic 3006**



**Apartment For Rent**

Tuesday, 14 May 2024

2607/245 City Road, Southbank, Vic 3006

**Bedrooms: 2**

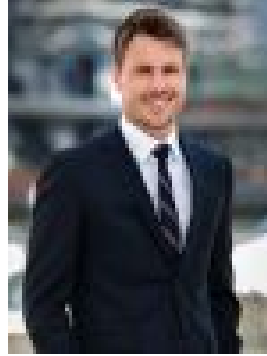
**Bathrooms: 1**

**Parkings: 1**

**Type: Apartment**



Eva Christodoulou  
0390911400



Dylan Emmett  
0390911400

**\$680 per week**

This apartment located on the 26th floor of the luxurious Palladium Tower is in prime location between South Melbourne and the City of Melbourne. Enjoy the vibrant location of Southbank with its popular Southbank Boulevard, the convenient short walk to South Melbourne Markets or catch a tram straight into the city just outside the front door. Palladium Tower boasts the very best in contemporary design, featuring premium fittings and finishes, residences are bright and airy, with floor-to-ceiling windows and natural light in all bedrooms. Quality timber floors showcase elegance and space, while dimmable downlights allow you to create any ambiance you desire. For practicality, car parking and storage is available in the building podium. - Combined living and dining zone - Well-planned kitchen with quality integrated appliances - Spacious bedrooms with fitted robes - Stylish bathroom with laundry facilities - Split system heating/cooling and basement parking - Luxury facilities including a stunning pool & gym Palladium Tower is perfectly positioned amongst the exciting hustle and bustle of the city. In a thriving district just minutes from Melbourne's CBD, all you need is within proximity.