

2608/472 Pacific Highway, St Leonards, NSW 2065



Sold Unit

Friday, 15 September 2023

2608/472 Pacific Highway, St Leonards, NSW 2065

Bedrooms: 2

Bathrooms: 2

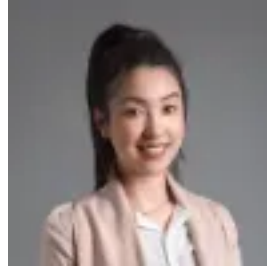
Parkings: 1

Area: 93 m2

Type: Unit



Jeffrey Li
0298848228



Faye Dai
0298848228

\$1,650,000

Designed for immaculate contemporary living and open plan in/outdoor entertaining, this high level northeast facing apartment boasts enviable resort-style living in the new 'St Leonards Square building. Quality appointments ensure there's nothing to spend and everything to enjoy. The building promotes an active lifestyle with a shared indoor lap pool, gym, spa, sauna, function rooms and terrace. Home Features: - Open plan kitchen, living/dining flow to covered balcony- Stone bench tops and gas stainless steel Miele appliances- Generous bedrooms with built-in robes, one with an ensuite- Internal laundry, ducted air conditioning, security entrance- Stroll to the heart of Crows Nest village eateries and nightlife- Approx. 300m to St Leonards train and bus interchange- Approx. 150m from the upcoming new Metro station- Within Anzac Park Public and Cammeraygal Girls High School catchment zone