

**2608/80 A'Beckett Street, Melbourne, Vic 3000**



## **Apartment For Rent**

Monday, 27 May 2024

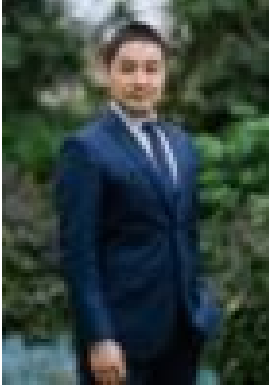
2608/80 A'Beckett Street, Melbourne, Vic 3000

**Bedrooms: 2**

**Bathrooms: 2**

**Parkings: 1**

**Type: Apartment**



Leslie Yin

**\$730 per week**

This two-bedroom, two-bathroom dwelling offers an enviable location. Situated at the intersection of A'Beckett Street and Elizabeth Street. Including the bustling cityscape, promises daily delight. The balcony serves as an idyllic spot to soak in the splendid scenery, providing an alfresco haven for serene mornings and intimate dinners. The central living and dining area seamlessly connects to the well-appointed stone kitchen, equipped with stainless steel appliances, including a dishwasher. The master bedroom boasts its own ensuite, while both bedrooms feature built-in robes (with balcony access), complemented by a luxurious main bathroom, discreet laundry, reverse cycle cooling, secure intercom, storage cage, and a designated parking space. Residents also enjoy access to a plethora of amenities, including a lounge, business center, swimming pool, spa, cinema, and a 53rd-floor rooftop sky lounge and terrace offering panoramic views of the city skyline. Nestled in the heart of the city, this property places you within arm's reach of an array of dining options, proximity to RMIT University, Melbourne Central with its train station, Queen Victoria Market, State Library of Victoria, and free tram services ensures convenience and connectivity.