

262 Mount Pleasant Road, Highton, Vic 3216



Sold House

Friday, 23 February 2024

262 Mount Pleasant Road, Highton, Vic 3216

Bedrooms: 3

Bathrooms: 1

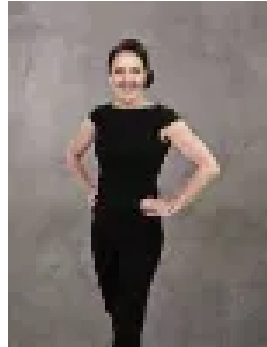
Parkings: 2

Area: 594 m2

Type: House



Ray Rounds
0417335576



Michelle Winckle
0352411488

\$570,000

Welcome to this character home nestled in the heart of a vibrant community. Situated in a coveted location, this residence boasts a rich history and original character and condition, making it a rare gem in today's market. Owned by the same family for over 40 years, this home has been a witness to countless memories and cherished moments. As you step through the front door, you're greeted by a warm and inviting atmosphere that instantly feels like home. The original features reflect a bygone era and add to the home's undeniable charm. The living area provides ample room for relaxation and entertainment, while large windows invite natural light to fill the space, creating a bright and welcoming ambiance throughout. 3 bedrooms are light and bright inc built in robes. The kitchen in original condition , exudes nostalgic charm and offers plenty of potential for improvement, allowing you to create your dream kitchen. Parents will appreciate the ease of walking their children to nearby schools, fostering a sense of community and connection. With shops and amenities just a stone's throw away, running errands and daily tasks become effortless, allowing you to make the most of your precious time with loved ones. With public transport located an instant from your front door, a convenient lifestyle is part of the package. Whether your destination is Highton Village, river-end Pakington Street, the Geelong CBD, or Deakin University Waurin Ponds Campus, a simple bus ride will take you there in no time. The North Valley Road shops are a short stroll away for your essentials, while nearby Highton Village places an array of cafes, shops, and supermarkets within easy reach. Fitness enthusiasts will appreciate living close to the sporty Highton Reserve. Montpellier Primary School is footsteps away, while a large selection of nearby schools are easily accessible. Proximity to the Ring Road, Barwon River, and Balyang Sanctuary Golf Course is the icing on the cake. This charming three-bedroom home positioned on a corner allotment with two street frontages presents a unique opportunity to own a piece of prime real estate, located in such a fantastic location. With its original character, rich history, and unbeatable convenience, it's not just a place to live but a lifestyle to embrace. Don't miss out on the chance to make this house your home and create your own cherished memories for generations to come. Contact us today to schedule a private viewing and experience the magic of this once in a lifetime buying opportunity. *All information about the property has been provided to Hayeswinckle by third parties. Hayeswinckle has not verified the information and does not warrant its accuracy or completeness. Parties should make and rely on their own enquiries in relation to this property.