

# 26A Grange Road, Silkstone, Qld 4304



## Sold House

Monday, 14 August 2023

26A Grange Road, Silkstone, Qld 4304

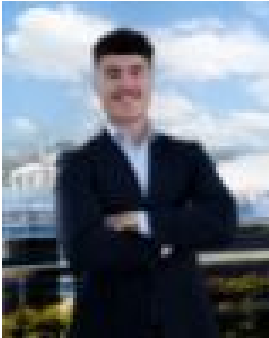
**Bedrooms: 4**

**Bathrooms: 2**

**Parkings: 2**

**Area: 405 m2**

**Type: House**



Charles Kimmorley



Daniel Parsons  
0466461772

**\$595,000**

Nestled on a 405m<sup>2</sup> allotment just a short 5-minute drive from the Ipswich CBD. This property offers the perfect combination of modern comfort, ample space, and convenient location. Upon entering, you'll be greeted by a well-designed floor plan that maximizes both functionality and style. The bedrooms are generously sized, fully carpeted, featuring ceiling fans and built-in robes to cater to all your storage needs. The master bedroom is a true retreat, complete with a split system air conditioning unit, a large walk-in robe, and an elegant ensuite for your ultimate comfort. The spacious garage not only provides secure parking for two vehicles but also boasts abundant storage space. With rear yard access, you'll have the convenience of parking your caravan or camper trailer at the rear, perfect for those who love to explore the great outdoors. The kitchen is a chef's dream, featuring sleek stone bench-tops and modern appliances including a dishwasher, electric cooktop, and oven. The ample storage space ensures all your kitchen essentials are neatly organised and easily accessible. The living area is serviced by a split system air conditioning unit, keeping you cool and comfortable year-round. The main bathroom offers a shower and bathtub, catering to the needs of the entire family. Step outside to the undercover entertainment area, where you can relax and unwind while enjoying the view of the beautifully landscaped backyard. It's the perfect spot for hosting gatherings or simply enjoying quiet evenings outdoors. To ensure your safety and peace of mind, security screens are installed throughout the property, providing added protection. There is a large park for the kids just down the road and the home is located close to the new Silkstone Shopping Village, Bundamba TAFE & Railway Station and only a short drive to Primary & Secondary Schools, shops and highway access to Brisbane or Toowoomba. Nearby Locations: • 1 minute drive to Silkstone Shopping Village • 3 minute drive to Booval Fair Shopping Centre • 3 minute drive to Ipswich Turf Club • 5 minute drive to Bundamba State School & Secondary College • 4 minute drive to Silkstone State School. With its desirable location just minutes from Ipswich CBD, this property offers easy access to shopping, dining, entertainment, and all the amenities the city has to offer. Don't miss the opportunity to make this stylish and convenient home yours. Listing agent: Charles Kimmorley & Daniel Parsons. Don't be disappointed, call me now - I'm waiting for your call. NGU Real Estate Ripley - The Kimmorley Group Results Speak Louder Than Words. Disclaimer: NGU Real Estate Ipswich has taken all reasonable steps to ensure that the information in this advertisement is true and correct but accept no responsibility and disclaim all liability in respect to any errors, omissions, inaccuracies or misstatements contained. Prospective purchasers should make their own inquiries to verify the information contained in this advertisement.