

**27/393 Liverpool Road, Ashfield, NSW 2131**



**Sold Unit**

Friday, 18 August 2023

27/393 Liverpool Road, Ashfield, NSW 2131

**Bedrooms: 2**

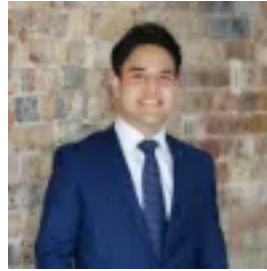
**Bathrooms: 2**

**Parkings: 1**

**Type: Unit**



Jackie Wang  
0295602040



Gautier Lam  
0295602040

**\$774,000**

In the heart of Ashfield's thriving lifestyle precinct and just footsteps to the train station and shopping amenities, this generous two-bedroom residence displays modern style and easy convenience. It sits in an elevated position with sweeping views over the rooftops and features a workable single-level floorplan that's ideally configured to meet the needs of those who enjoy low maintenance living. It's also perfectly positioned with Ashfield Mall, Asian grocers, cafés and restaurants all within a short stroll from the front door. Full of light and style with a great-sized open interior layout. A bright northerly aspect floods the rooms with natural light. Two large balconies, both perfect for relaxing or entertaining. Two bedrooms include a main that opens onto a balcony. Quality gas kitchen, full bathroom, ensuite and internal laundry. Lift access to a security car space with EV charging available. In a full brick security complex with landscaped common areas.