

**27/58-70 Passendale Road, Edmondson Park, NSW
2174**



Unit For Sale

Monday, 15 April 2024

27/58-70 Passendale Road, Edmondson Park, NSW 2174

Bedrooms: 2

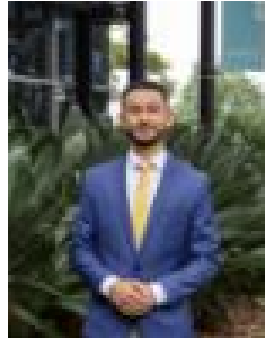
Bathrooms: 2

Parkings: 2

Type: Unit



Tim Aaron
0434059820



Alejandro Nagamine
0404115515

\$699,000 - \$730,000

Experience contemporary urban living at its finest in this stylish apartment located in the thriving community of Edmondson Park. Designed with modern convenience and comfort in mind, this property offers an ideal blend of functionality and sophistication. Boasting an open-plan living and dining area that seamlessly flows to a private balcony, perfect for outdoor relaxation. Offering a sleek and modern design with high-quality finishes throughout the home. Located within a well-maintained complex with landscaped gardens as well as being within close proximity to Edmondson Park train station, local shops, schools, and parks. Features Include: * Two great sized bedrooms with built in wardrobes to both * Ensuite and balcony to the master bedroom * Open plan dining and living * Modern kitchen offering gas cooking, plus an abundance of bench and cupboard space * Main bathroom with floor to ceiling tiles and a bathtub * Internal laundry * Walk in linen * Downlights throughout * Split system air conditioning * Large balcony perfect for entertaining * Secure double car space with storage Location: * Approx 700m to Lillian Bratkovic Park * 800m to St Francis Catholic College * 1km to Edmondson Park Station * 1.3km to McDonalds Edmondson Park * 1.1km to Aldi * 1.1km to Clermont Park Call today for further details!