

27 Birch Drive, Bungendore, NSW 2621



House For Rent

Monday, 29 April 2024

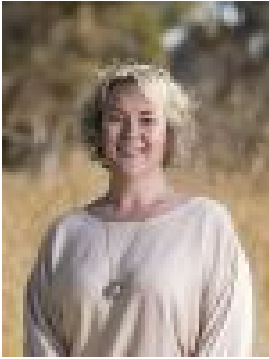
27 Birch Drive, Bungendore, NSW 2621

Bedrooms: 5

Bathrooms: 2

Parkings: 2

Type: House



Lesley Cloake
0401358263

\$950 per week

This would have to be one of the most popular locations of Bungendore, right opposite the Elmslea Ponds. The home is Modern Country in Design and is sure to appeal. Outside, the gardens are private and well established, inside, the home is spacious and offers a family-friendly layout. The kitchen is U-shape with more than enough storage & benchspace, a 900mm oven and dishwasher. Entertaining here will be a breeze with multiple living spaces - The lounge opens on to the front and rear verandahs, a large dining space is positioned off the kitchen and a kids retreat space is near bedrooms 4 and 5. Upstairs you will find another 3 bedrooms - the Master suite is very large and also offers an additional living space or parents retreat (currently set up as a home theatre). • Slow combustion fireplace • Reverse Cycle units • Gas boosted hydronic heating • Double Glazed windows • Instant Gas hot water • Fruit trees & chicken run • Double garage + workshop • 5 bedrooms (4 have Built-in robes) Outdoor pets considered on application. Available early January. The successful applicant is required to pay 4 weeks rent for the bond and the first 2 weeks rent in advance. Disclaimer: All information regarding this property is from sources we believe to be accurate, however we cannot guarantee its accuracy. Interested persons should make and rely on their own enquiries in relation to inclusions, figures, measurements, dimensions, layout, furniture and descriptions