

27 Broughton Avenue, Croydon, Vic 3136

House For Sale

Tuesday, 5 December 2023



27 Broughton Avenue, Croydon, Vic 3136

Bedrooms: 3

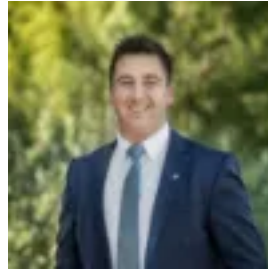
Bathrooms: 1

Parkings: 2

Type: House



Ash Thompson
0398706211



Alan Hodges
0398706211

\$700,000 - \$770,000

Showcasing a quality contemporary renovation framed by lush low-maintenance gardens and lawn, this single level rendered home boasts impeccably presented interiors across an inviting open plan layout. Nestled within one of the finest pockets of Croydon, the home offers immense appeal to both growing families and those looking to downsize in style. Positioned within a peaceful family neighbourhood just a stroll from buses, Lipscombe Reserve and renowned McAdam Square shopping, the home is also moments from Luther College, Yarra Valley Grammar, Good Shepherd Primary School, Melba Secondary College and Croydon Hills Primary School. Croydon Station, Croydon shopping and restaurants, and Mullum Mullum Creek Trail bushland are close by, with Eastland Shopping Centre also a short drive away. A light-filled living and dining area flows out to a generous north-facing terrace, overlooking landscaped gardens with plenty of secure space for relaxed outdoor dining, family play or pets. Flooded with natural light via an elegant conservatory-style window, the generous contemporary kitchen comprises stone benchtops, a breakfast bar, ample inbuilt storage, and premium Bosch appliances including a semi-integrated dishwasher and a gas cooktop. Three carpeted bedrooms are each equipped with built-in wardrobes, and are complemented by an impressive contemporary central bathroom with floor-to-ceiling feature tiling, a walk-in frameless glass waterfall shower, a large stone vanity, chic brushed brass tapware, and a separate W/C. A large stone laundry offers excellent storage and direct outdoor access. Featuring wide floating timber flooring, newly laid carpeting, split system air conditioning / heating and stylish plantation shutters, the home also includes a lock-up storage shed, a remote lock-up garage, and space for additional off-street parking.