

27 Franklin Street, Leederville, WA 6007

Realmark

Sold House

Saturday, 30 September 2023

27 Franklin Street, Leederville, WA 6007

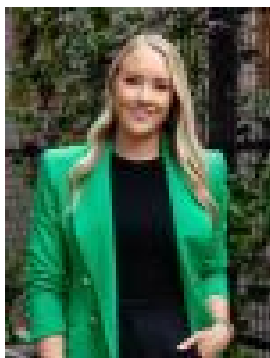
Bedrooms: 5

Bathrooms: 2

Parkings: 2

Area: 556 m2

Type: House



Montana Colreavy
0892030777

Contact agent

Why wait 3 to 4 years to buy a block, get your home designed, approved and then built in this climate when you can HAVE IT ALL NOW! Super convenient and perfectly positioned between the two bustling town centres of Leederville and Mount Hawthorn, this home is an easy walk to dinner at either end of Oxford Street or to meet friends for a drink. All amenities are close by including the shops at the Mezz in Mt Hawthorn or IGA in Leederville. WHAT YOU NEED TO KNOW:- High end luxurious home fastidiously built by renowned luxury home builder Avera Homes in 2014.- Set in historical precinct under the tall steeple of St Mary's Church and the grand character architecture of Aranmore High School.- When the church bells ring on Sunday morning at 9am and 10am you will instantly feel like you are in a village somewhere in Europe.- Sparkling city views and tree top sights from within your home.- Grand entry hall and feature staircase.- BIG master bedroom with walk in robe and luxurious bathroom with separate shower, double vanities and corner bath to soak and enjoy the city view from.- Three VERY LARGE minor bedrooms all the built in robes.- Office / study with wonderful aspect across to the church and its high steeple.- Two powder room toilets plus two toilets in bathrooms.- Upstairs living and meals area with lots of glass so that you can over look the city lights or take in all the tree top aspects that surround this home.- Built in feature fireplace to warm you on a winters day.- Large kitchen with well thought out layout, heaps of storage and bench space, breakfast bar and quality appliances.- Big balcony with built in kitchenette and bar fridge so you can entertain your guests or have a family BBQ. Balcony includes motorised privacy blinds and built in speakers connected to Sonos.- Home theatre room with reclining theatre chairs and ceiling lighting for effect. Imagine all your family movie nights.- Downstairs games room / living room that flows outside through two banks of bi fold doors.- Big alfresco with built in kitchen for more family fun.- Sparkling below ground swimming pool with water fall feature and bubbling heated spa.- Large lawn area for the kids or furry friends.- Big built in cubby house for the children to play and storage area for the lawnmower and gardening tools.- Double lock up garage with storage / work space / store area to the side.- Laundry with lots of built in linen space and access to private drying courtyard.- Ducted reverse cycle air-conditioning and alarm system.- Within the catchment zone for Bob Hawke College and West Leederville Primary School- Across from Aranmore High School and short distance to Aranmore Primary School.- Total living: 313sqm (approx)- Total land: 556sqm (as per title) OUTGOINGS- Council rates: \$3,901.26/pa (approx)- Water rates: \$2,244.09/pa (approx)